



LADDER & WORK PLATFORM CATALOG

ELEVATION Through INNOVATION

Ballymore™ Products: PG. 8 - 30

Tri-Arc Products: PG. 31 - 51

Hybrid Ladder & Docking Station

Lighter & More Maneuverable Than Any Ladder On the Market

Easy Stowing, Space Saving

PG. 10



BALLYMORE™ CANTILEVER LADDER PG. 19



SINGLE ENTRY WORK PLATFORM PG. 27



ALUMINUM LOCKSTEP LADDERS PG. 40



LOCK-N-STOCK PG. 11



FIXED LADDER PG. 41



WORK TITAN LADDER PG. 21



PRO-LINE LADDER PG. 21



MOST BALLYMORE™ LADDERS SHIP IN A BOX

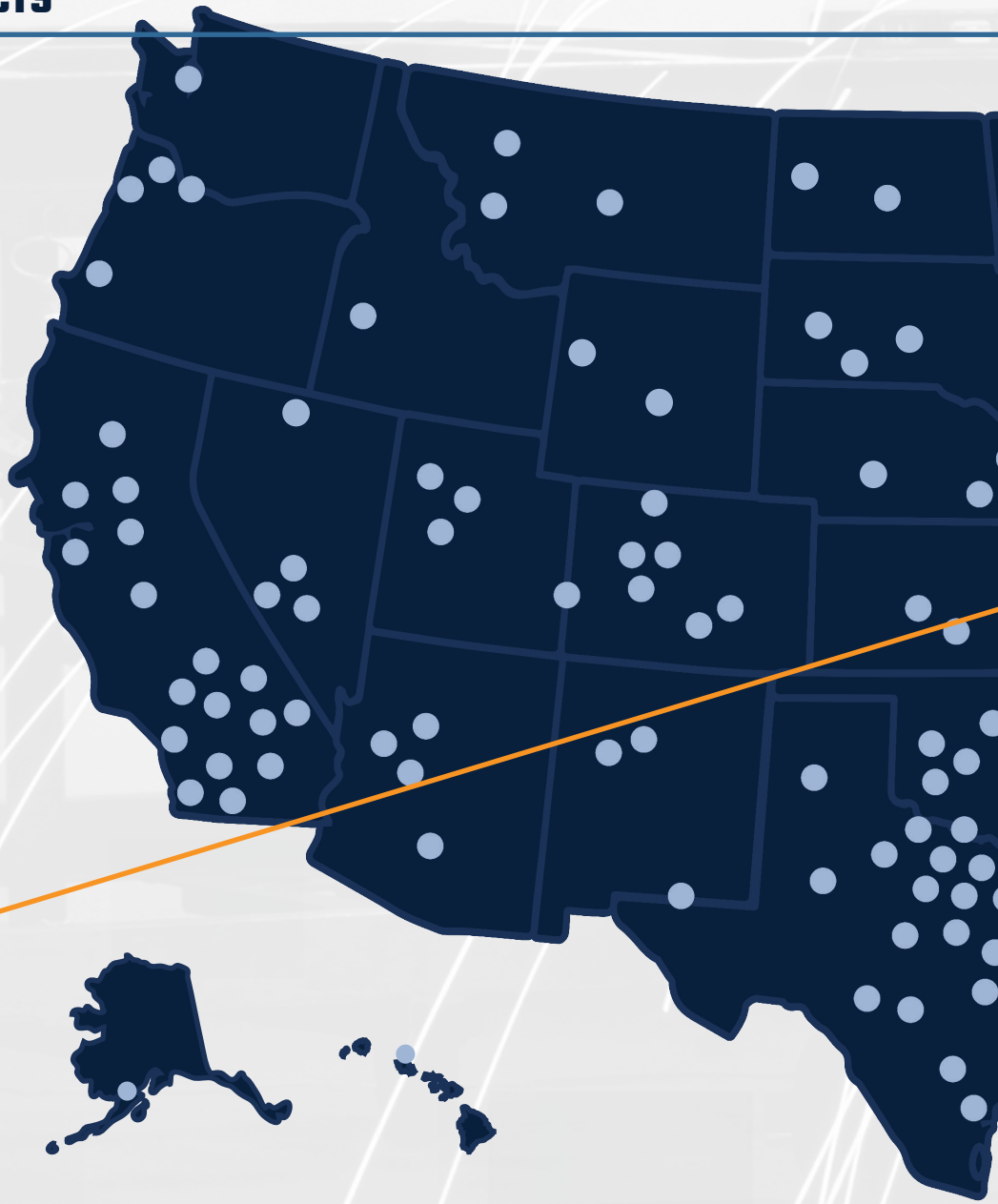
- Minimize risk of freight damage
- Lowers shipping costs
- Boxes stack easily allowing cost effective stocking of ladders

BALLYMORE SAFETY PRODUCTS

BALLYMORE SAFETY PRODUCTS



TRI-ARC



**FINANCING AVAILABLE
ON LIFTS & MATERIAL HANDLING
PRODUCTS OVER \$3,500!**



**AS LOW AS
\$XX.XX
PER MONTH**

BALLYMORE SAFETY
PRODUCTS IS FOUNDED

1945

BALLYMORE ACQUIRES
LIFT PRODUCTS INC.

2021

2023

BALLYMORE ACQUIRES
DOC SERVICES INC.

2024

2024

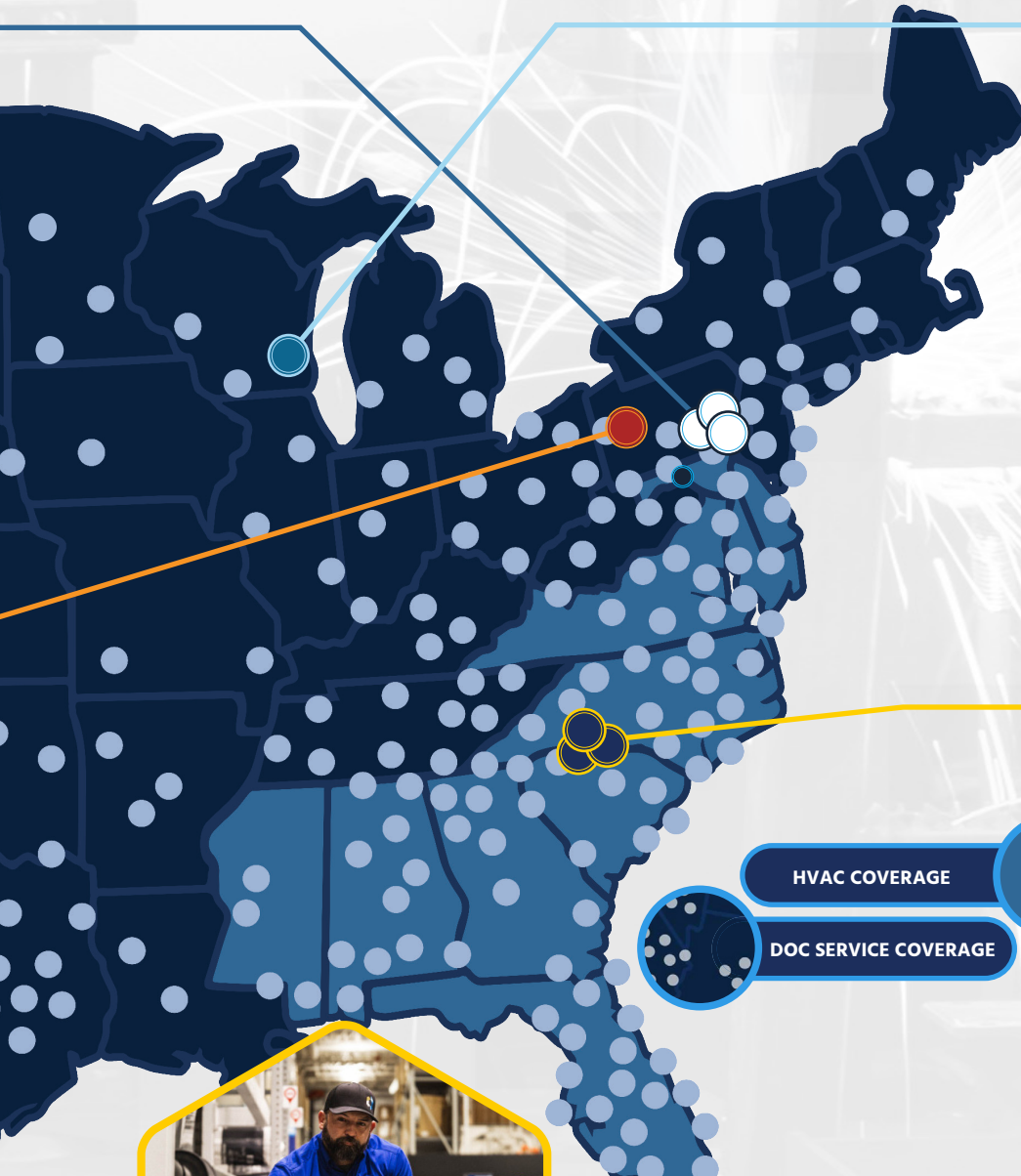
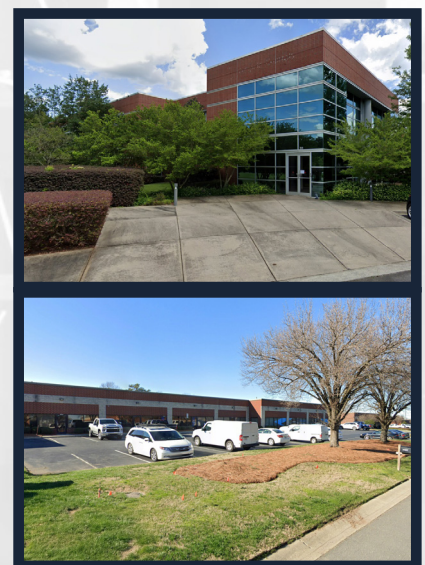
BALLYMORE ACQUIRES
TRI-ARC MANUFACTURING

BALLYMORE IS ACQUIRED BY
ONE EQUITY PARTNERS

LIFT PRODUCTS INC.



DOC SERVICES INC.



HVAC COVERAGE

DOC SERVICE COVERAGE

Creating a full-scale
products, service, and
safety solutions provider

NATIONWIDE SERVICE





TABLE OF CONTENTS



Hybrid Ladder & Docking Station

Lightweight aluminum-steel hybrid ladder, designed for superior maneuverability, and available in a foldable version with a docking station for effortless storage

PG.10



Folding Ladders

Discover the ultimate in convenience and space-saving with our versatile folding ladders, designed for easy storage and maximum portability

PG.11



Stainless Steel Ladders

Durable stainless-steel ladders with a bead-blasted finish for a smooth, uniform surface, offering enhanced corrosion resistance and superior moisture protection

PG.23



Steel Work Platform

Versatile adjustable height work platforms and fork deck maintenance platforms, designed for flexibility, efficiency, and optimal support in every task

PG.24

Replaceable Components

Extend ladder life with replaceable locksteps, handrails, base frames & rear verticals. Most parts ship by UPS so your ladders can be back in service quickly.

High Quality Casters

Ballymore ladders roll on the best casters in the industry, featuring polytread, and ball bearings.

Heavy Duty Construction

The base frame and rear verticals of our Monster Line, Heavy Duty Slope Ladder series, Cantilever, Pro-Line, Work Titan, UCU/UCS, KDHD and all 50° Tri-Arc and Work Platforms are designed with heavy duty 2" x 1" rectangular tubing.



BALLYMORE'S PATENTED LADDER IN A BOX

Lowers Shipping Costs

Minimizes the Risk of Fright Damage

Boxes Stack Easily allowing cost effective stocking of ladders!



Ballymore Steel Rolling Ladders

Wide range of ladders, including spring-loaded, 50° forward descent, all-directional, stock picking, cantilever, and super heavy-duty models, designed for specific needs with superior durability and customizable options

PG.12-21



Ballymore Aluminum Ladders

Lightweight, weather resistant, durable & easy to transport, with noncorrosive properties that make them the ideal choice for many applications in both outdoor and indoor environments

PG.22



Tank Top

Adjustable height cantilevered platform provides safe access with a wide range of optional accessories and customizable solutions

PG.25



Ballylift

Compact design with foldable rails for easy storage and maneuverability, ideal for building maintenance tasks, all at a budget-friendly price

PG.26



Mobile Work Platform

Heavy-duty single and double entry work platforms simplify maintenance operations, boosting productivity. Ideal for manufacturers, assembly lines, distribution centers, and stockrooms

PG.27-28



Industrial Crossovers

Industrial crossovers feature a 3-piece construction with two stair sections and one bridge, providing safe, efficient access for a variety of work environments. Available in alternate configurations

PG.29



TABLE OF CONTENTS

TRIARC

Mobile Step Stools



Mobile step stools, available in 1, 2, or 3 steps, come in lightweight aluminum or heavy-duty steel with ribbed, perforated, or grip strut options for added safety

PG.31

TRIARC

Steel Rolling Ladders



Wide variety with features for every vertical access need including spring-loaded, mobile step stand, adjustable height, stock picking, 50 degree safety angle, all-terrain, all-directional, and heavy duty

PG.32-38

TRIARC

U-Design Ladders



U-Design ladders offer configurable cantilever and steel rolling options, with customizable kits that let you design the perfect ladder to fit your specific needs

PG.42-43

TRIARC

U-Design Crossovers & Platforms



Create a custom platform and ladder configuration, ideal for any application where work is performed at height

PG.44-47

TRIARC

Truck Access Platforms



Designed for routine maintenance and inspection of refrigerated units on small to medium-sized trucks, featuring adjustable height platforms for easy access

PG.49

TRIARC

Versa Steps



Provides a safe stairway to raised buildings, trailers, or bleachers, with adjustable modular legs for easy positioning flush against door thresholds and secure attachment

PG.50

Have You Wondered the Difference the Right Tool Makes?



ERGONOMIC EVALUATOR

Ballymore Safety Products is proud to provide ergonomic evaluation services through our website!

Scan the QR code for a free safety evaluation.



TRIARC

Aluminum Ladders

Lightweight for easy movement and repositioning, corrosion-resistant for durability in moist or chemical environments, and available in spring-loaded or standard lockstep models

PG.39-40



TRIARC

Fixed Steel Ladders

Fixed steel ladders are permanently attached with brackets for roof access or regular maintenance, available in rung lengths from 4 to 7 steps for reliable, durable use

PG.41

TRIARC

Mobile Steel Work Platforms

Designed to accommodate multiple workers, providing stable, durable, and secure access for tasks at height in demanding environments

PG.48

TRIARC

Adjustable Height Work Platform

Adjustable height work platforms effortlessly accommodate fluctuating work heights, ensuring ergonomic solutions with seamless height adjustment for enhanced comfort and efficiency

PG.49



U-DESIGN Design your custom ladder system

CONFIGURABLE LADDERS

U-Design Configurable Products are an innovative way to more effectively and efficiently identify, select and then purchase the most suitable ladder model for your climbing and access needs, while receiving a custom solution at an off-the-shelf price. Our Configurator Program allows you to easily design, edit and order your custom ladder system.

HOW TO CHOOSE

Consider The Ladder Material

Powder-coated steel ladders are corrosion-resistant and work well in dry areas, with load capacities ranging from 450 to 1000 lbs. They are component-based and replaceable parts.

Aluminum ladders are lightweight, suitable for indoor and outdoor use, but not around electricity. They have a 350 lbs. load capacity.

Hybrid ladders combine aluminum and powder-coated steel for lightweight maneuverability and strength, with a 450 lbs. weight capacity.

Stainless steel ladders are durable and corrosion-resistant, ideal for various environments, including food and marine. They're easy to clean and maintain, with replaceable parts.

Tread Types

Perforated Step Tread: Economical and provides excellent slip resistance. This tread is used extensively in retail and storeroom applications. Available in Steel, Aluminum (Tri-Arc and Hybrid Ladders), and Stainless Steel (Ballymore).

Expanded Metal Step Tread: This aggressive tread is ideal for warehouse or retail applications. This design is self-cleaning, allowing foot debris to fall through the tread. Available in Steel Only (Ballymore)

Serrated Grating Tread: This is the most aggressive tread and is designed for the shop floor or any industrial application where maximum slip resistance is required. Available in Steel, Aluminum (Tri-Arc), and Stainless Steel (Ballymore)

Abrasive Mat Tread: A solid steel step with a Non-Skid Abrasive Mat. Ideal for retail applications. Available in Steel Only

Ribbed Tread: Economical aluminum tread. Available in Aluminum Only.

Specialty and Custom Ladders

We offer specialty solutions to meet your specific requirements. Standard options include deep top steps, all-Directional capability, Employee Only signage, exits on the ladder (front or rear), custom colors (Ballymore only), etc. If these options do not align with your specific needs, please feel free to contact us for further assistance with a custom order.



Choosing the right ladder involves considering various aspects. Different materials offer varying levels of strength and durability.

Steel

Aluminum



Abrasive Mat Tread

Ballymore: R Tread
Tri-Arc: 3 Tread



Perforated Tread

Ballymore: P Tread



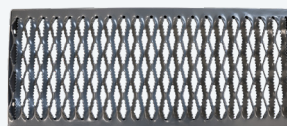
Perforated Tread

Tri-Arc: 6 Tread



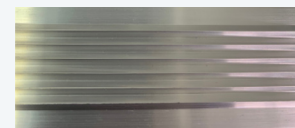
Expanded Metal Tread

Ballymore: X Tread



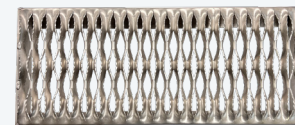
Serrated Tread

Also Known As
Grip Strut
Ballymore: G Tread
Tri-Arc: 2 Tread



Ribbed Tread

Ballymore: Ribbed Tread
Tri-Arc: 4 Tread



Serrated Tread

Ballymore: G Tread
Tri-Arc: 5 Tread



Perforated Tread

Tri-Arc: 6 Tread

A LADDER



Factors, and the material of the ladder is a crucial factor, length, durability, and corrosion resistance.

Size Considerations



Step Width



16"



24"



36"

Size Considerations

Platform Height: Determine both your working and platform height dimensions, so you are able to figure the number of steps you will need. Select platform height based on operations to be performed or weight and bulk of object to be carried. The maximum convenient working height is generally 5 - 6 feet above the top step or platform.

Ceiling Height: Also consider the ceiling height. Minimum ceiling height should be 6 - 7 feet above the top step or platform.

Step Width: This will depend on your surroundings. Is this being used outdoors? In a warehouse? In a manufacturing facility? Standard widths are 16", 24" and 36". In larger ladders, choose a wide ladder over a narrow one if space permits. For very bulky loads, consider a stairway slope ladder and/or deeper top steps.

Aisle Space and Other Obstructions: Ask yourself: Will people pass the ladder in an aisle? Where will it be stored when not in use and is there enough space to accommodate? Always consider limitations on ladder dimensions imposed by doorways, overhead obstructions, corners to be turned, etc.

NOTE: Load capacity (lbs.) is the combined weight of user & materials.

Locking Mechanisms

Lift Assist Lockstep (Patented Ballymore Only): Safest and most durable lock step on the market today. Apply weight to the steps and the ladder automatically drops the front feet to the ground securing the ladder for safe climbing.

Weight Actuated Lockstep (Patented Ballymore Only): This Patented state of the art lock step automatically actuates when weight is applied to the stair section.

Standard Lockstep: Ideal for applications over 5 steps. These ladders are raised into the rolling position when the lift bar is depressed. To release the lock step, step on the release bar in front of the first step.

Spring Loaded Casters: Ideal for shorter ladders 5 steps and below. On this style ladders, the wheel retract under the user's weight securing the ladder to the floor.

Patented Lift Assist Lock Step

*Ballymore Only



Patented Weight Actuated Lock Step

*Ballymore Only



Standard Lock Step



Spring Loaded Casters





HYBRID FIXED LADDER

• 450 LB. CAPACITY

- Fixed Hybrid Ladder comes in multiple step widths and sizes
- Made from high quality hybrid materials:
 - Steel handrails, base, and rear vertical for durability and strength
 - Aluminum stairway for lighter weight and maneuverability
- 14" Deep Top Step
- Ballymore's Lift Assist Lockstep
- Perforated Aluminum Tread Only
- Built to OSHA and ANSI standards



NEW

HYBRID FOLDABLE LADDER & DOCKING STATION

• 450 LB. CAPACITY

- Made from high quality hybrid materials:
 - Steel handrails, base, and rear vertical for durability and strength
 - Aluminum stairway for lighter weight and maneuverability
- All directional, steel raised base
- Lift Assist Lockstep
- Patent pending gas spring casters.
- Perforated Aluminum Tread Only - 12" Deep Top Step
- Docking Station Powder Coated Black Finish
- Built to OSHA and ANSI standards



Store your ladder in under 20 seconds

- Maximizes Floor Space
- Improves Safety
- Boosts Efficiency
- Enhances Organization

MODEL#	# OF STEPS INCLUDING TOP STEP	HEIGHT INCHES		BASE W" x L"	WGT Lbs.
		TOP STEP	OVER ALL		
16" STEP WIDTH					
HY-LA-062414P	6 STEP	60"	96"	28" x 51"	115
HY-LA-072414P	7 STEP	70"	106"	28" x 57"	128
HY-LA-082414P	8 STEP	80"	116"	28" x 64"	141
24" STEP WIDTH					
HY-LA-063214P	6 STEP	60"	96"	34" x 51"	121
HY-LA-073214P	7 STEP	70"	106"	34" x 57"	136
HY-LA-083214P	8 STEP	80"	116"	34" x 64"	148
HY-LA-093214P	9 STEP	90"	126"	34" x 70"	160
HY-LA-103214P	10STEP	100"	136"	34" x 77"	178
HY-LA-113214P	11 STEP	110"	146"	34" x 83"	190
HY-LA-123214P	12 STEP	120"	156"	34" x 90"	203

MODEL #	HEIGHT INCHES	BASE W" x L"	WGT Lbs.
HY-DOCK*	111"	35" x 17"	771

* Fits all sizes of Folding Hybrid Ladders from 7-12 Steps

MODEL #	# OF STEPS INCLUDING TOP STEP	CLEARANCE HIGHT IN INCHES		BASE W" x L"	WGT Lbs.
		TOP STEP	OVER ALL		
24" STEP WIDTH					
HY-LA-073212P-F	7 STEP	72"	112"	34.5" x 60"	179
HY-LA-083212P-F	8 STEP	82"	122"	34.5" x 66.5"	198
HY-LA-093212P-F	9 STEP	92"	132"	34.5" x 73"	217
HY-LA-103212P-F	10 STEP	102"	142"	34.5" x 79.5"	236
HY-LA-113212P-F	11 STEP	112"	152"	34.5" x 86"	255
HY-LA-123212P-F	12 STEP	122"	162"	34.5" x 92.5"	274





MODEL #	STEPS	TOP STEP HEIGHT	FOLDED DIMENSIONS	OPEN W" X L"	WEIGHT LBS.
TL218	2	20"	3 X 21 X 41	21 X 26	22
TL318	3	30"	3 X 21 X 52	21 X 32	31
TL418	4	40"	3 X 21 X 64	21 X 38	42



THIN LINE LADDER

- **300 LB. CAPACITY**
- Made out of strong and durable, heavy duty 1" square tubing
- Complies with applicable OSHA & ANSI standards
- No assembly required
- Less than 4" thick when folded
- Ships via UPS in a box to eliminate freight damage
- Rolls easily in the open or closed position
- 50° slope for easy climbing
- Standard finish is powder coat blue

MODEL #	STEPS INCLUDING TOP STEP	TOP STEP HEIGHT	WEIGHT LBS.	OPEN WIDTH & LENGTH	FOLDED SIZE	SHIPS UPS (Oversize)
LS2247	2 STEP	19"	36 lbs.	24 x 17	10 x 24 x 41	YES
LS3247	3 STEP	28.5"	44 lbs.	24 x 23	10 x 24 x 52	YES
LS4247	4 STEP	38"	51 lbs.	24 x 30	10 x 24 x 65	YES
LS32410*	3 STEP	28.5"	46 lbs.	24 x 28	14 x 24 x 62	YES
LS42410*	4 STEP	38"	52 lbs.	24 x 35	14 x 24 x 73	YES
ALS3247	3 STEP	28.5"	23 lbs.	24 x 23	10 x 24 x 52	YES
ALS4247	4 STEP	38"	28 lbs.	24 x 30	10 x 24 x 65	YES
ALS32410	3 STEP	28.5"	26 lbs.	24 x 28	14 x 24 x 62	YES
ALSS42410	4 STEP	38"	31 lbs.	24 x 35	14 x 24 x 73	YES



LOCK-N-STOCK FOLDING LADDER STAND

Climb it, Roll it, Fold it & Store it!

- **Heavy duty rated for 350 lbs.**
- Welded construction
- Easy to maneuver in the open or closed positions
- Locks in the folded or climbing position
- No hinge to break
- 16" Wide steps
- Blue powder coat finish
- Approximately 10" deep when folded for easy storage
- Complies with applicable OSHA & ANSI standards

* CAL OSHA Compliant

The Modified Folding Ladder

- 10" Deep top step
- 30" Handrails with guard rail

The Standard Folding Ladder

- 7" Deep top step
- 22" High handles

MODEL #	STEPS INCLUDING TOP STEP	HEIGHT INCHES		BASE W" x L"	WGT Lbs.
		TOP STEP	OVERALL		
FAWL-5	5 STEP	50"	83"	30 x 46	90
FAWL-6	6 STEP	60"	93"	30 x 52	100
FAWL-7	7 STEP	70"	103"	30 x 58	110
FAWL-8	8 STEP	80"	113"	30 x 64	120
FAWL-9	9 STEP	90"	123"	30 x 70	135
FAWL-10	10 STEP	100"	133"	30 x 76	148
FAWL-11	11 STEP	110"	143"	30 x 82	165
FAWL-12	12 STEP	120"	153"	30 x 88	175



FOLD & STORE LADDER

- **350 LB. CAPACITY**
- Can be folded for storage or transportation
- Tilt and roll mobility
- Large 10" rubber wheels roll easily on rough surfaces
- 16" Wide Treads
- Ships un-assembled
- Tools required to fold
- Complies with applicable OSHA & ANSI standards



TILT & ROLL LADDER

- **450 LB. CAPACITY**
- Balanced design allows ladder to tilt easily and roll effortlessly on two 4" large wheels
- 16" or 24" wide steps
- Specify tread type when ordering
- Ships unassembled in a box
- Fully assembled ladders available - specify (SU)
- Gray powder coat finish
- Some ladders are produced "All-Welded"
- Complies with applicable OSHA & ANSI standards



STANDARD ROLLING LADDER WITH SPRING LOADED CASTERS

- **450 lb. capacity**
- Working heights up to 12'
- Spring loaded swivel casters retract under user's weight
- 7" deep steps with 10" deep top step on 1 - 4 step models shown with (*) in the chart below
- 14" deep top step on 4 - 7 step FSH models
- **Specify tread type when ordering**
- 1 - 4 step ladders (*) ship unassembled in a box, and are eligible for UPS shipping
- 4 - 7 step FSH models ship unassembled
- Specify set-up (SU) if required***
- Available in all welded construction
- Gray powder coat finish
- Complies with applicable OSHA & ANSI standards
- CAL OSHA available



Straddle Base Model #HL-4



MODEL #	STEPS INCLUDING TOP STEP	HEIGHT INCHES		BASE W" x L"	WGT Lbs.	EXTRA FEATURES
		TOP STEP	OVER ALL			
TR-24" WIDE STEP						
TR-2	2 STEP	20	53	30 x 34	60	WITH TR 20"DEEP TOP STEP
TR-3	3 STEP	30	63	30 x 40	73	
TR-4	4 STEP	40	73	30 x 46	88	
TR-5	5 STEP	50	83	30 x 52	102	
TR-6	6 STEP	60	93	30 x 58	117	
HL-24" WIDE STEP						
HL-2NS	2 STEP	20	53	26 x 32	72	WITH STRADDLE BASE
HL-3NS	3 STEP	30	63	26 x 38	84	
HL-4NS	4 STEP	40	73	26 x 44	96	
HL-5NS	5 STEP	50	83	26 x 50	108	
HL-6NS	6 STEP	60	93	26 x 56	128	
16" WIDE STEP						
H218TR	2 STEP	19	49	20 x 24	36	ALL WELDED CONSTRUCTION ----- 10" DEEP TOP STEP
H318TR	3 STEP	28.5	58.5	20 x 30	45	
H418TR	4 STEP	38	68	20 x 36	56	
24" WIDE STEP						
H226TR	2 STEP	19	49	30 x 24	42	
H326TR	3 STEP	28.5	58.5	30 x 30	50	
H426TR	4 STEP	38	68	30 x 36	65	
16" WIDE STEP						
FSTR418	4 STEP	40	73	20 x 40	68	SHIPS BOXED UNASSEMBLED ----- 14" DEEP TOP STEP
FSTR518	5 STEP	50	83	20 x 47	75	
FSTR618	6 STEP	60	93	24 x 54	83	
TR-24" WIDE STEP						
FSTR426	4 STEP	40	73	30 x 40	80	
FSTR526	5 STEP	50	83	30 x 47	87	
FSTR626	6 STEP	60	93	30 x 54	98	

FSH526X



SHIP KNOCKED DOWN
For Reduced Shipping Cost & Freight Damage



SCAN
to see it in action!

	STEPS INCLUDING TOP STEP	HEIGHT INCHES		16" WIDE STEP			24" WIDE STEP		
		TOP STEP	OVER ALL	MODEL #	BASE W" x L"	WGT Lbs.	MODEL #	BASE W" x L"	WGT Lbs.
BOXED	NO HANDRAILS								
	1 STEP	12	12	118*	18 x 16	18	126*	26 x 16	20
	2 STEP	19	19	218*	20 x 19	22	226*	30 x 19	28
	3 STEP	28.5	28.5	318*	20 x 25	31	326*	30 x 25	36
	4 STEP	38	38	418*	20 x 31	42	426*	30 x 31	51
	WITH HANDRAILS								
	2 STEP	19	49	*H218 ^u	20 x 19	36	*H226 ^u	30 x 19	42
	3 STEP	28.5	58.5	*H318 ^u	20 x 25	45	*H326 ^u	30 x 25	50
	4 STEP	38	68	*H418 ^u	20 x 31	56	*H426 ^u	30 x 31	65
	4 STEP	40	73	FSH418	20 x 35	68	FSH426	30 x 35	80
	5 STEP	50	83	FSH518	20 x 42	75	FSH526	30 x 42	87
	6 STEP	60	93	FSH618	24 x 49	83	FSH626	30 x 49	98
	7 STEP	70	103	FSH718	24 x 56	89	FSH726	30 x 56	108

*Eligible for UPS *Handrails may ship in separate box

MODEL #	STEPS INCLUDING TOP STEP	HEIGHT INCHES		BASE W" x L"	WGT Lbs.
		TOP STEP	OVER ALL		
16" WIDE STEP WITH 24" WIDE BASE					
052414	5 STEP	50"	83"	24 x 43	91
062414	6 STEP	60"	93"	24 x 49	100
072414	7 STEP	70"	103"	24 x 55	109
082414	8 STEP	80"	113"	24 x 61	127
24" WIDE STEP WITH 32" - 40" WIDE BASE					
053214	5 STEP	50"	83"	32 x 43	110
063214	6 STEP	60"	93"	32 x 49	122
073214	7 STEP	70"	103"	32 x 55	143
083214	8 STEP	80"	113"	32 x 61	160
093214	9 STEP	90"	123"	32 x 68	175
103214	10 STEP	100"	133"	32 x 74	193
113214	11 STEP	110"	143"	32 x 80	205
123214	12 STEP	120"	153"	32 x 87	220
134014	13 STEP*	130"	175"	40 x 94	250
144014	14 STEP*	140"	185"	40 x 100	280
154014	15 STEP*	150"	195"	40 x 106	310

* Must be Skidded

AVAILABLE TREAD TYPE OPTIONS:

(P) Perforated (Standard) (R) Abrasive Mat
(G) Heavy Duty Serrated Grating (X) Expanded Metal
PLEASE SPECIFY WHEN ORDERING



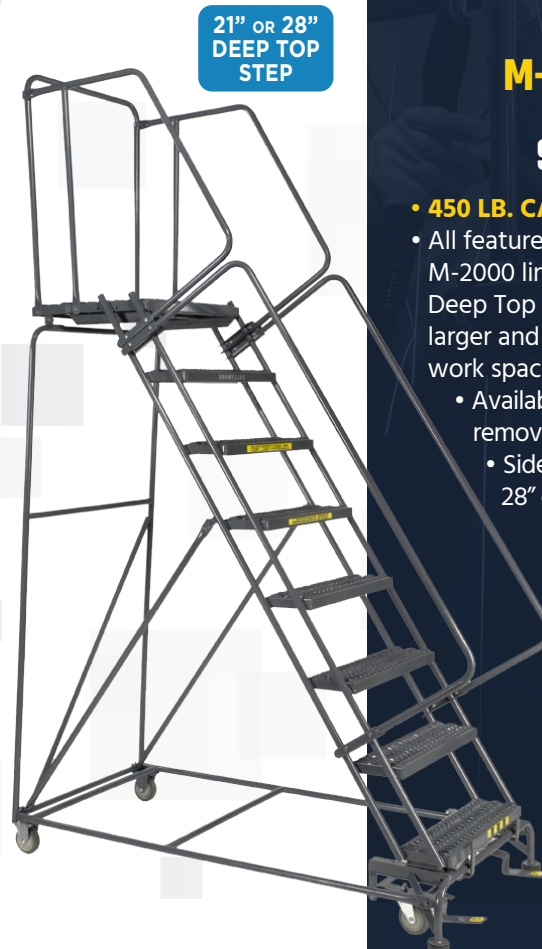
14" DEEP TOP STEP

M-2000 SERIES ROLLING SAFETY LADDER

- **450 LB. CAPACITY**
- Easy to use foot-pedal activated lockstep
- High quality casters with bearing and dust cover
- 14" deep top step
- Ships unassembled for freight savings
- Available fully assembled, specify (SU) set-up
- Specify tread type when ordering
- Rigid 1" OD tubing
- 30" high handrails
- 21" & 28" deep top step available (see below)
- Available with rear guard rail removed for walk through
- Gray powder coat finish
- Complies with applicable OSHA & ANSI standards
- CAL OSHA available

STEPS INCLUDING TOP STEP	HEIGHT INCHES		21" DEEP TOP STEP			28" DEEP TOP STEP		
	TOP STEP	OVER ALL	MODEL #	BASE W" x L"	WGT Lbs.	MODEL #	BASE W" x L"	WGT Lbs.
16" WIDE STEP WITH 24" WIDE BASE								
5 STEP	50"	83"	052421	24 x 50	102	052428	24 x 57	113
6 STEP	60"	93"	062421	24 x 56	111	062428	24 x 63	122
7 STEP	70"	103"	072421	24 x 62	120	072428	24 x 69	131
8 STEP	80"	113"	082421	24 x 68	138	082428	24 x 75	149
24" WIDE STEP WITH 32" - 40" WIDE BASE								
5 STEP	50"	83"	053221	32 x 50	121	053228	32 x 57	132
6 STEP	60"	93"	063221	32 x 56	133	063228	32 x 63	144
7 STEP	70"	103"	073221	32 x 62	154	073228	32 x 69	165
8 STEP	80"	113"	083221	32 x 68	171	083228	32 x 75	182
9 STEP	90"	123"	093221	32 x 75	186	093228	32 x 82	197
10 STEP	100"	133"	103221	32 x 81	204	103228	32 x 88	215
11 STEP	110"	143"	113221	32 x 87	216	113228	32 x 94	227
12 STEP	120"	153"	123221	32 x 94	231	123228	32 x 101	242
13 STEP*	130"	175"	134021	40 x 101	261	134028	40 x 108	272
14 STEP*	140"	185"	144021	40 x 107	291	144028	40 x 115	302
15 STEP*	150"	195"	154021	40 x 113	321	154028	40 x 120	332

* Must be Skidded



21" OR 28" DEEP TOP STEP

M-2000 SERIES DEEP TOP STEP LADDER

- **450 LB. CAPACITY**
- All features of the standard M-2000 line with a 21" or 28" Deep Top Step to provide a larger and more comfortable work space
- Available with rear guardrail removed for walk through
- Side exit available on 28" deep top step models



50° SLOPE WALK DOWN LADDER

• 450 LB. CAPACITY

- 50° stairway slope allows easier climbing and descent
- Foot pedal activated lockstep
- 14" deep top step standard
- 21" and 28" deep top steps available
- Specify tread type when ordering
- Ships KD for freight savings
- Available fully assembled, specify (SU) set-up
- Available with rear guardrail removed for walk through
- Gray powder coat finish
- Complies with applicable OSHA & ANSI standards
- CAL OSHA available

50° SAFETY ANGLE FORWARD DESCENT



Easier climbing and descent!



AVAILABLE TREAD TYPE OPTIONS:

(P) Perforated (Standard) (R) Abrasive Mat
(G) Heavy Duty Serrated Grating (X) Expanded Metal

PLEASE SPECIFY WHEN ORDERING

MODEL #	STEPS INCLUDING TOP STEP	TOP STEP	OVER ALL	BASE W" x L"	WGT Lbs.
16" WIDE STEP					
SW524	5 STEP	50"	83"	24 x 50	96
SW624	6 STEP	60"	93"	24 x 60	109
SW724	7 STEP	70"	103"	24 x 68	122
SW824	8 STEP	80"	113"	24 x 76	135
24" WIDE STEP					
SW532	5 STEP	50"	83"	32 x 50	115
SW632	6 STEP	60"	93"	32 x 60	120
SW732	7 STEP	70"	103"	32 x 68	139
SW832	8 STEP	80"	113"	32 x 76	165
SW932	9 STEP	90"	123"	32 x 85	180
SW1032	10 STEP	100"	133"	32 x 93	200
SW1132	11 STEP	110"	143"	32 x 101	210
SW1232	12 STEP	120"	153"	32 x 110	230

Think Safety... Buy Weight Actuated. The PATENTED LockStep from Ballymore

MODEL #	# OF STEPS INCLUDING TOP STEP	HEIGHT INCHES		BASE W" x L"	WGT Lbs.
		TOP STEP	OVER ALL		
16" WIDE STEP					
WA052414	5 STEP	50"	83"	24 x 43	91
WA062414	6 STEP	60"	93"	24 x 49	100
WA072414	7 STEP	70"	103"	24 x 55	109
WA082414	8 STEP	80"	113"	24 x 61	127
24" WIDE STEP					
WA053214	5 STEP	50"	83"	32 x 43	110
WA063214	6 STEP	60"	93"	32 x 49	122
WA073214	7 STEP	70"	103"	32 x 55	143
WA083214	8 STEP	80"	113"	32 x 61	160
WA093214	9 STEP	90"	123"	32 x 68	175
WA103214	10 STEP	100"	133"	32 x 74	193
WA113214	11 STEP	110"	143"	32 x 80	205
WA123214	12 STEP	120"	153"	32 x 87	220
WA134014	13 STEP	130"	175"	40 x 94	250
WA144014	14 STEP	140"	185"	40 x 100	280
WA154014	15 STEP	150"	195"	40 x 106	310



PATENTED WEIGHT ACTUATED LOCKSTEP LADDER

- **450 LB. CAPACITY**
- This state of the art lockstep has one pedal which lifts the ladder into the rolling position
- As you climb the ladder your weight activates the lockstep – securing the ladder to the floor in the climbing position
- Available in 59° Ladder Slope or 50° Stairway Slope
- 14" deep top step standard 21" and 28" available
- Durable: manufactured with 1" OD tubing
- Complies with applicable OSHA & ANSI standards
- Gray powder coat finish
- CAL OSHA available

BALLYMORE INTRODUCES WEIGHT ACTUATED LADDERS

**THE MOST
DURABLE
LOCK STEP
ON THE
MARKET
TODAY!**



Designed using finite element analysis, then robotically tested. Prototypes achieved over 60,000 cycles before replacing latch hook. Then 60,000 more cycles!

ANOTHER EXCLUSIVE BALLYMORE INNOVATION

Ballymore engineered its patented weight actuated lock step to provide an easy, safe and reliable mechanism to secure rolling ladders to the floor to ensure safe climbing and descent. Ladders equipped with our weight actuated lockstep lock to the ground when worker steps on any step of the ladder and applies just 70 lbs of pressure. The weight actuated lockstep is designed to prevent two major

accidents: utilizing the ladder while in the rolling position, and the ladder being pushed with another worker on the top platform.

**WHEN SAFETY COUNTS, COUNT
ON BALLYMORE.**

**IF SAFETY IS IMPORTANT, THIS
IS THE ANSWER AND IS ONLY
AVAILABLE FROM BALLYMORE.**



THE NAVIGATOR ALL DIRECTION ROLLING LADDER WITH WEIGHT ACTUATED LOCKSTEP

• 450 lbs. CAPACITY

- 14" Deep Top Step
- Available 7-10 Steps
- All Directional maneuverability
- Patented weight activated lockstep
- Standard fixed rails or folding side rails
- Ships KD in a box, reducing freight cost and minimizing risk of freight damage
- Available fully assembled, specify (SU) set-up
- Gray powder coat finish
- Complies with applicable OSHA & ANSI standards
- CAL OSHA available

ALL DIRECTION ROLLING LADDER

• 450 LB. CAPACITY

- Turns in its own radius
- 14" deep top step
- Easy to use foot-pedal activated lockstep
- Gray powder coat finish
- Complies with applicable OSHA & ANSI standards
- CAL OSHA available
- SHIPS KD to reduce freight costs
- Available assembled, specify (SU) set-up
- Specify tread type when ordering
- (X) Expanded Metal Standard
- (P) Perforated
- (R) Abrasive Mat
- (G) Heavy Duty Serrated Grating



PATENTED BOXED
LADDER SYSTEM



SHOWN WITH
FOLDING RAILS



Unique Patented Design & Engineering

TYPICAL END USE:

- Stores that up-stock product on the showroom floor
- Retail Stores with tight aisles
- Warehouse Applications
- Stockrooms • Storage Areas

MODEL #	STEPS INCLUDING TOP STEP	HEIGHT INCHES		BASE W" x L"	WGT Lbs.
		TOP STEP	OVER ALL		
WITH STANDARD FIXED SIDE RAILS					
NAV-7RS	7 STEP	70	103	26 x 51	160
NAV-8RS	8 STEP	80	113	26 x 57	176
NAV-9RS	9 STEP	90	123	26 x 63	192
NAV-10RS	10 STEP	100	133	26 x 69	210
WITH FOLDING SIDE RAILS					
NAV-9RF	9 STEP	90	123	26 x 63	192
NAV-10RF	10 STEP	100	133	26 x 69	210

Available in Abrasive Mat Tread

PATENTED WEIGHT ACTUATED LOCKSTEP & ALL-DIRECTIONAL CASTER SYSTEM

All-Directional Caster System



Rolls on 4 swivel casters allowing ladders to move in ALL DIRECTIONS - even laterally! Rigid rear casters easily transition between floor types.

MODEL #	STEPS INCLUDING TOP STEP	HEIGHT INCHES		BASE W" x L"	WGT Lbs.
		TOP STEP	OVER ALL		
16" WIDE STEP					
PIP-6	6 STEP	60	93	24 x 49	110
PIP-7	7 STEP	70	103	24 x 55	125
PIP-8	8 STEP	80	113	24 x 61	140
24" WIDE STEP					
PIP-6-32	6 STEP	60	93	32 x 49	133
PIP-7-32	7 STEP	70	103	32 x 55	154
PIP-8-32	8 STEP	80	113	32 x 61	171
PIP-9	9 STEP	90	123	32 x 68	186
PIP-10	10 STEP	100	133	32 x 74	204
PIP-11	11 STEP	110	143	32 x 80	216
PIP-12	12 STEP	120	153	32 x 87	231

Weight Actuated Lockstep combined with All Directional Maneuverability

MODEL #	STEPS INCLUDING TOP STEP	HEIGHT INCHES		BASE W" x L"	WGT Lbs.
		TOP STEP	OVER ALL		
16" WIDE STEP					
WA-AD-052414	5 STEP	50"	83"	24 x 43	91
WA-AD-062414	6 STEP	60"	93"	24 x 49	110
WA-AD-072414	7 STEP	70"	103"	24 x 55	125
WA-AD-082414	8 STEP	80"	113"	24 x 61	140
24" WIDE STEP					
WA-AD-053214	5 STEP	50"	83"	32 x 43	110
WA-AD-063214	6 STEP	60"	93"	32 x 49	133
WA-AD-073214	7 STEP	70"	103"	32 x 55	154
WA-AD-083214	8 STEP	80"	113"	32 x 61	171
WA-AD-093214	9 STEP	90"	123"	32 x 68	186
WA-AD-103214	10 STEP	100"	133"	32 x 74	204
WA-AD-113214	11 STEP	110"	143"	32 x 80	216
WA-AD-123214	12 STEP	120"	153"	32 x 87	231
WA-AD-134014	13 STEP*	130"	175"	40 x 94	250
WA-AD-144014	14 STEP*	140"	185"	40 x 100	280
WA-AD-154014	15 STEP*	150"	195"	40 x 106	310



14" DEEP
TOP STEP

WEIGHT ACTUATED ALL DIRECTION LOCKSTEP LADDER

- **450 LB. CAPACITY!**
- Patented lockstep - most durable in the industry, with All Direction Option
- Rolls on 4 swivel casters allowing ladder to move in all directions
- Your weight activates lockstep, locking ladder to the floor in the climbing position
- Standard 14" deep top step, 21" & 28" top step available
- Durable 1" O.D. steel tubing
- Gray powder coat finish
- Complies with applicable OSHA & ANSI standards
- CAL OSHA available

Weight Actuated Lockstep



Apply 70 pounds of pressure to the steps & the ladder automatically drops the front feet to the ground securing the ladder to the floor for safe climbing. Single pedal easily lifts ladder into the rolling position.

50° SAFETY ANGLE

**FORWARD
DESCENT**



ALL DIRECTIONAL MOBILITY!

WEIGHT ACTUATED 50° STAIRWAY SLOPE OPTION ALL DIRECTION LOCKSTEP LADDER

- **450 LB. CAPACITY**
- Patented lockstep - most durable in the industry
- Your weight activates the lockstep as you climb, locking ladder to the floor in the climbing position
- 50° stairway slope allows easier climbing and descent
- Standard 14" deep top step, 21" & 28" top step available
- Durable 1" O.D. steel tubing
- Gray powder coat finish
- Available w/Rear Guard rail removed for easy walk through
- Complies with applicable OSHA & ANSI standards
- CAL OSHA available

MODEL #	STEPS INCLUDING TOP STEP	HEIGHT INCHES		BASE W" x L"	WGT Lbs.
		TOP STEP	OVER ALL		
16" WIDE STEP					
WA-AD-SW-052414	5 STEP	50"	83"	24 x 50	96
WA-AD-SW-062414	6 STEP	60"	93"	24 x 60	109
WA-AD-SW-072414	7 STEP	70"	103"	24 x 68	122
WA-AD-SW-082414	8 STEP	80"	113"	24 x 76	135
24" WIDE STEP					
WA-AD-SW-053214	5 STEP	50"	83"	32 x 50	115
WA-AD-SW-063214	6 STEP	60"	93"	32 x 60	120
WA-AD-SW-073214	7 STEP	70"	103"	32 x 68	139
WA-AD-SW-083214	8 STEP	80"	113"	32 x 76	165
WA-AD-SW-093214	9 STEP	90"	123"	32 x 85	180
WA-AD-SW-103214	10 STEP	100"	133"	32 x 92	200
WA-AD-SW-113214	11 STEP	110"	143"	32 x 101	210
WA-AD-SW-123214	12 STEP	120"	153"	32 x 110	230



14" DEEP
TOP STEP

50° Stairway Slope
Allows Easier Climbing
and Descent.



STOCK PICKING ROLLING LADDER

• COMBINED 600 LBS. CAPACITY

- 450 lbs. Max for ladder
- 300 lbs. Max for shelves
- Combines the benefits of a rolling safety ladder and a stock-picking cart
- 16" or 24" wide steps
- 14" or 21" deep top step
- Sturdy Stock Shelves:
- 2 shelves on 6 - 7 step models
- 3 shelves on 8 - 12 step models
- Specify Tread Type when Ordering Ladders
- Gray powder coat finish
- CAL OSHA available
- Ships unassembled & boxed to reduce freight costs
- Complies with applicable OSHA & ANSI standards

Combines the benefits of a rolling safety ladder and a stock-picking cart!



MODEL #	STEPS INCLUDING TOP STEP	HEIGHT INCHES		BASE W" x L"	WGT Lbs.
		TOP STEP	OVER ALL		
16" WIDE TREAD 14" Deep Top Step					
SPL-6-14N	6 STEP	60	93	24 x 49	80
SPL-7-14N	7 STEP	70	103	24 x 55	89
SPL-8-14N	8 STEP	80	113	24 x 61	120
16" WIDE TREAD 21" Deep Top Step					
SPL-6-N	6 STEP	60	93	24 x 56	91
SPL-7-N	7 STEP	70	103	24 x 63	100
SPL-8-N	8 STEP	80	113	24 x 68	131
24" WIDE TREAD 14" Deep Top Step					
SPL-6-14	6 STEP	60	93	32 x 49	150
SPL-7-14	7 STEP	70	103	32 x 55	166
SPL-8-14	8 STEP	80	113	32 x 61	205
SPL-9-14	9 STEP	90	123	32 x 68	215
SPL-10-14	10 STEP	100	133	32 x 74	225
SPL-11-14	11 STEP	110	143	32 x 80	235
SPL-12-14	12 STEP	120	153	32 x 87	250
24" WIDE TREAD 21" Deep Top Step					
SPL-6	6 STEP	60	93	32 x 56	160
SPL-7	7 STEP	70	103	32 x 63	176
SPL-8	8 STEP	80	113	32 x 68	215
SPL-9	9 STEP	90	123	32 x 76	225
SPL-10	10 STEP	100	133	32 x 82	235
SPL-11	11 STEP	110	143	32 x 87	245
SPL-12	12 STEP	120	153	32 x 94	260

Please specify tread type when ordering.

TRUCK/DOCK ACCESS LADDER

• 450 lb. CAPACITY

- Ideal for accessing trucks or loading docks
- 21" deep top step
- 10" rear rubber wheels - Great on parking lots or rough surfaces
- Gray powder coat finish
- Complies with applicable OSHA & ANSI standards
- Lightweight - lift & roll wheelbarrow portability
- 50° stairway slope
- 2" x 1" rectangular rear vertical
- Heavy duty serrated grating step tread
- No Rear Guardrail standard for easy walk through (includes snap chain)



STAIRWAY SLOPE LADDER SLOPE 50 DEGREE					
MODEL #	TOP STEP HEIGHT	OVERALL HEIGHT	STEP WIDTH	BASE W" x L"	WEIGHT LBS.
SW-TA-5-24	50"	80"	24"	32" x 60"	155
SW-TA-5-36	50"	80"	36"	44" x 60"	180

Models Shown are for Serrated Treads

Cantilever Ladders • Heavy Duty Construction for Heavy Duty Applications!



**SPECIAL PURPOSE LADDER
AS DEFINED BY ANSI-14.7**

**BASE FRAME
AND REAR
VERTICAL
RUGGED
2" x 1"**



CANTILEVER SERIES LADDER

- **300 lbs. Capacity**
- 59 degree slope
- Heavy-duty 1" x 2" rectangular frame
- High quality 5" x 2" locking casters
- Available with Rear Guardrail removed for easy walk through
- Powder coat finish
- Ships KD to prevent freight damage and lower freight cost

**Higher weight capacities
available - call for
details.
800-762-8327**

				14" OVERHANG		28" OVERHANG	
MODEL #	STEPS	PLATFORM HEIGHT	VERTICAL CLEARANCE	WEIGHT	BASE W" x D"	WEIGHT	BASE W" x D"
CL-6	6	60"	57"	493	32 x 46	735	32 x 53
CL-7	7	70"	67"	467	32 x 52	695	32 x 52
CL-8	8	80"	77"	437	32 x 58	665	32 x 58
CL-9	9	90"	87"	405	32 x 65	583	32 x 65
CL-10	10	100"	97"	426	32 x 71	554	32 x 71
CL-11	11	110"	107"	430	32 x 77	569	32 x 77
CL-12	12	120"	117"	409	32 x 84	537	32 x 84
CL-13	13	130"	127"	442	40 x 90	520	40 x 90
CL-14	14	140"	137"	475	40 x 96	553	40 x 96
CL-15	15	150"	147"	458	40 x 103	536	40 x 103

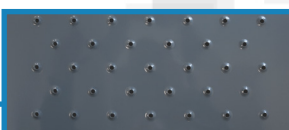
				35" OVERHANG		42" OVERHANG	
MODEL #	STEPS	PLATFORM HEIGHT	VERTICAL CLEARANCE	WEIGHT	BASE W" x D"	WEIGHT	BASE W" x D"
CL-6	6	60"	57"	763	32 x 60	791	32 x 67
CL-7	7	70"	67"	773	32 x 59	801	32 x 66
CL-8	8	80"	77"	779	32 x 58	807	32 x 65
CL-9	9	90"	87"	697	32 x 65	811	32 x 65
CL-10	10	100"	97"	668	32 x 71	782	32 x 71
CL-11	11	110"	107"	633	32 x 77	747	32 x 77
CL-12	12	120"	117"	601	32 x 84	715	32 x 84
CL-13	13	130"	127"	634	40 x 90	698	40 x 90
CL-14	14	140"	137"	617	40 x 96	681	40 x 96
CL-15	15	150"	147"	600	40 x 103	664	40 x 103

**Add platform
overhang length
& tread to model
number when
ordering**

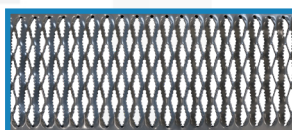
EX. CL-6-14-P



**Perforated Tread
(P Tread)**



**Serrated Tread
(G Tread)**





MONSTER LINE LADDER

- Patented Weight Actuated Lockstep
- Rugged 2" x 1" Rectangular tubing base frame and rear vertical

- 21" deep top step
- 59 degree slope
- 24" wide steps standard
- High quality non marking wheels w/roller bearings and dust cover
- Rear corner bumpers - standard
- All-Directional option available
- Gray powder coat finish
- Available w/o rear guard - rail for easy walk through
- Complies with applicable OSHA & ANSI standards
- CAL OSHA available
- Certified in Canada

HEAVY DUTY STAIRWAY SLOPE LADDER

- **HEAVY DUTY - RUGGED 600 LBS. CAPACITY**
- 50° stairway slope allows easier climbing and descent
- 14" deep Top Step for added comfort & safety
- 10" deep intermediate steps
- 21" and 28" deep top steps are available
 - Easy operating lockstep secures ladder to the floor
- Gray powder coat finish
- All direction option available
- Available with rear guardrail removed for walk through
- Gray powder coat finish
- Complies with applicable OSHA & ANSI standards
- CAL OSHA available



50° SAFETY ANGLE

FORWARD DESCENT



Available with
ALL DIRECTIONAL OPTION

Recommended on all 10, 11 & 12 step models

MODEL #	STEPS INCLUDING TOP STEP	HEIGHT INCHES		BASE W" x L"	WGT Lbs.
		TOP STEP	OVER ALL		
ML063221	6 STEP	60"	93"	32" x 53"	165
ML073221	7 STEP	70"	103"	32" x 59"	189
ML083221	8 STEP	80"	113"	32" x 66"	209
ML093221	9 STEP	90"	123"	32" x 72"	227
ML103221	10 STEP	100"	133"	32" x 78"	248
ML113221	11 STEP	110"	143"	32" x 84"	263
ML123221	12 STEP	120"	153"	32" x 90"	281
ML134021	13 STEP	130"	175"	40" x 96"	314
ML144021	14 STEP	140"	185"	40" x 102"	347
ML154021	15 STEP	150"	195"	40" x 108"	380

Base Frame & Rear Vertical Rugged 2" x 1" Rectangular Tubing • 21" Deep Top Step Standard • Patented Weight Actuated Lockstep Specify tread when ordering.

AVAILABLE TREAD TYPE OPTIONS:

- (P) Perforated (Standard)
(G) Heavy Duty Serrated Grating
(X) Expanded Metal

**600 Lb.
Capacity!**

MODEL #	STEPS INCLUDING TOP STEP	HEIGHT INCHES		BASE W" x L"	WGT Lbs.
		TOP STEP	OVER ALL		
HDS-5	5 STEP	50"	83"	32 x 50	154
HDS-6	6 STEP	60"	93"	32 x 59	185
HDS-7	7 STEP	70"	103"	32 x 67	223
HDS-8	8 STEP	80"	113"	32 x 75	248
HDS-9	9 STEP	90"	123"	32 x 84	278
HDS-10	10 STEP	100"	133"	32 x 92	306
HDS-11	11 STEP	110"	143"	32 x 101	348
HDS-12	12 STEP	120"	153"	32 x 109	371

AVAILABLE TREAD TYPE OPTIONS:

- (P) Perforated (Standard)
(G) Heavy Duty Serrated Grating
(R) Abrasive Mat
(X) Expanded Metal

PLEASE SPECIFY WHEN ORDERING



**Ballymore's
Component Design
with Replaceable
Parts!**

Optional Replaceable
**SKID PLATE FOR
ROUGH SURFACES**



Ladder Shelves & Trays

- Hanging Shelf
- Hanging Tray

PART #	DESCRIPTION	# PER SET
*PR-2	2" Replacement Casters Sets	4
*PR-3	3" Replacement Casters Sets	4
PS	Replacement Springs	4
PTHDS	Replacement Rubber Tips	4
SBR-4	4" Replacement Casters Sets	4
FW-2	10" Rubber Wheels	2
DONUTS	2.5" Donut Style Pads	2

Rear Exit or Side Exit Available

- 28" deep top step required for Side Exit
- Not available on ladders with spring loaded casters
- See price list for cost

**LADDER
REPLACEMENT**

**PARTS &
OPTIONS**

***Must specify
of steps
and width
(Set includes
casters, springs,
rubber tips and
hardware)**

The Most Heavy-Duty Rolling Ladders in the Industry!

50° SAFETY ANGLE

FORWARD DESCENT



Lift Assist Lockstep

800 Lb. Capacity!



Available With Entrance Chain
EMPLOYEES ONLY

MODEL #	STEPS INCLUDING TOP STEP	HEIGHT INCHES		BASE W" x L"	WGT Lbs.
		TOP STEP	OVER ALL		
WT-LA063221P	6 STEP	60"	102"	32" x 63"	192
WT-LA073221P	7 STEP	70"	112"	32" x 71"	217
WT-LA083221P	8 STEP	80"	122"	32" x 80"	242
WT-LA093221P	9 STEP	90"	132"	32" x 88"	268
WT-LA103221P	10 STEP	100"	142"	32" x 96"	293
WT-LA113221P	11 STEP	110"	152"	32" x 105"	318
WT-LA123221P	12 STEP	120"	162"	32" x 113"	344



NEW

WORK TITAN LADDER

- **800 LBS. CAPACITY**
- 50 degree stairway slope allows worker to descend the ladder facing outward
- 21" Deep Top Step
- Ballymore's Patented Lift Assist Lockstep
- Base Frame and Rear Vertical Weldment – 2" X 1" Rectangular Tubing
- Perforated Tread
- Rails on both sides of steps are 34" high
- Both rails sides of top step – 42" high with vertical midrails
- Rear Guardrail – 42" high with vertical midrail
- 4" toeboard

50° SAFETY ANGLE

FORWARD DESCENT



Heavy Duty Saloon Style Doors

1,000 Lb. Capacity!



MODEL #	STEPS INCLUDING TOP STEP	HEIGHT INCHES		BASE W" x L"	WGT Lbs.	TREAD TYPE
		TOP STEP	OVER ALL			
PL063228G	6 STEP	60"	102"	32" x 73"	322	SERRATED TREAD
PL073228G	7 STEP	70"	112"	32" x 82"	342	
PL083228G	8 STEP	80"	122"	32" x 91"	355	
PL093228G	9 STEP	90"	132"	32" x 99"	389	
PL103228G	10 STEP	100"	142"	32" x 108"	409	
PL113228G	11 STEP	110"	152"	32" x 116"	442	
PL123228G	12 STEP	120"	162"	32" x 162"	463	PERFORATED TREAD
PL063228P	6 STEP	60"	102"	32" x 73"	307	
PL073228P	7 STEP	70"	112"	32" x 82"	325	
PL083228P	8 STEP	80"	122"	32" x 91"	336	
PL093228P	9 STEPS	90"	132"	32" x 99"	368	
PL103228P	10 STEPS	100"	142"	32" x 108"	386	
PL113228P	11 STEPS	110"	152"	32" x 116"	417	
PL123228P	12 STEPS	120"	162"	32" x 124"	436	



NEW

PRO-LINE LADDER

- **1000 LBS. CAPACITY**
- 50 degree stairway slope allows worker to descend the ladder facing outward
- 28" Deep Top Step
- Ballymore's Patented Lift Assist Lockstep
- Base Frame and Rear Vertical Weldment – 2" X 1" Rectangular Tubing
- Balance of Frame and Rails – 1-1/2" OD Steel tubing
- Available with rear exit
- Perforated & Serrated Tread
- Rails on both sides of steps are 34" high
- Both rails sides of top step – 42" high with vertical midrails
- 10" deep intermediate steps
- Rear Guardrail – 42" high with vertical midrail
- 4" toeboards



ALUMINUM LADDER

• 350 LB. CAPACITY

- All welded
- Aluminum mill finish industrial grade welds
- Ideal for use in banks, libraries & hospitals and wash down applications lightweight design
- Non-magnetic and non-sparking
- Paint-free for food and pharmaceutical applications
- Solid ribbed tread or heavy duty serrated grating
- 14 standard deep top step
- Optional 21" & 28" deep top step
- Complies with applicable OSHA & ANSI standards

* Eligible for UPS. Tilt and roll casters add 5" to base length.
NOTE: Aluminum ladders are subject to a 50% restocking charge



Specify Tread Type when Ordering

- (R) Ribbed Tread
(G) Heavy Duty Serrated Grating

SPRING LOADED CASTERS MODEL #	TILT & ROLL MODEL #	STEPS INCLUDING TOP STEP	HEIGHT INCHES		BASE W" x L"	WGT Lbs.
			TOP STEP	OVER ALL		
18" WIDE STEP						
A2S*	-	2 STEP NO RAILS	20	20	20 x 19	15
A3S*	-	3 STEP NO RAILS	30	30	20 x 25	20
A4S	-	4 STEP NO RAILS	40	40	20 x 31	29
A2SH	A2SH-TR	2 STEP	20	50	20 x 19	21
A3SH	A3SH-TR	3 STEP	30	60	20 x 25	27
A4SH	A4SH-TR	4 STEP	40	70	20 x 31	34
24" WIDE STEP						
A2S30*	-	2 STEP NO RAILS	20	20	30 x 19	22
A3S30*	-	3 STEP NO RAILS	30	30	30 x 25	28
A4S30	-	4 STEP NO RAILS	40	40	30 x 31	35
A2SH30	A2SH30-TR	2 STEP	20	50	30 x 19	22
A3SH30	A3SH30-TR	3 STEP	30	60	30 x 25	34
A4SH30	A4SH30-TR	4 STEP	40	70	30 x 31	41
A5SH30	A5SH30-TR	5 STEP	50	80	30 x 37	49
A6SH30	A6SH30-TR	6 STEP	60	90	30 x 43	60
A7SH30	A7SH30-TR	7 STEP	70	100	30 x 49	67

ALUMINUM WHEELBARROW STYLE LADDER

• 300 LB. CAPACITY

- Industrial-grade welds
- 14" deep top step standard
- Complies with applicable OSHA & ANSI standards
- Lightweight lift & roll portability for easy maneuvering
- 10" rear rubber wheel-rolls on rough surfaces
- Nonmagnetic, non-sparking & paint-free

Aluminum wheelbarrow style ladders provide lightweight lift & roll portability for easy maneuvering

TYPICAL END USE:



Libraries



Banks



Hospitals



Universities



Corrosion Resistant • Light Weight • Aluminum Rolling Ladders

Aluminum ladders are lightweight, weather resistant, durable & easy to transport, with noncorrosive properties that make them the ideal choice for many applications in both outdoor and indoor environments.

STEPS INCLUDING TOP STEP	HEIGHT INCHES		BASE W" x L"	18" WIDE TREAD		24" WIDE TREAD*	
	TOP STEP	OVER ALL		MODEL #	WGT Lbs.	MODEL #	WGT Lbs.
5 STEP	50"	83"	30 x 47	ALWB5	42	ALWB530	50
6 STEP	60"	93"	30 x 53	ALWB6	50	ALWB630	60
7 STEP	70"	103"	30 x 60	ALWB7	58	ALWB730	70
8 STEP	80"	113"	36 x 66	ALWB8	66	ALWB830	80
9 STEP	90"	123"	36 x 72	ALWB9	74	ALWB930	90
10 STEP	100"	133"	36 x 78	ALWB10	82	ALWB1030	100

MODEL #	STEPS INCLUDING TOP STEP	HEIGHT INCHES		BASE W" x L"	WGT Lbs.
		TOP STEP	OVER ALL		
16" WIDE STEP					
SS052414	5 STEP	50"	83"	24 x 46	95
SS062414	6 STEP	60"	93"	24 x 52	105
SS072414	7 STEP	70"	103"	24 x 58	114
SS082414	8 STEP	80"	113"	24 x 64	132
24" WIDE STEP					
SS053214	5 STEP	50"	83"	32 x 46	113
SS063214	6 STEP	60"	93"	32 x 52	126
SS073214	7 STEP	70"	103"	32 x 58	147
SS083214	8 STEP	80"	113"	32 x 64	165
SS093214	9 STEP	90"	123"	32 x 70	180
SS103214	10 STEP	100"	133"	32 x 76	199
SS113214	11 STEP	110"	143"	32 x 82	211
SS123214	12 STEP	120"	153"	32 x 88	227

Lockstep Ladder shown with perforated tread Built to OSHA and ANSI



STAINLESS STEEL ROLLING LADDERS

• 450 LB. CAPACITY

- Ideal for wash down and corrosive environments
- Type T304 Stainless Steel construction
- 1-3 step ladders are all welded and have a 10" deep top step
- 4-12 step ladders have 14" deep top step standard
- Deeper top steps available on all models
- Bead blasted for uniform finish
- Casters for lock step ladders are stainless steel
- Spring Loaded casters are stainless and springs are carbon steel
- Complies with applicable OSHA & ANSI standards
- CAL OSHA available

Stainless Steel Ladders Ideal for Wash Down & Corrosive Environments

SPRING LOADED CASTER MODELS

Spring loaded casters retract under user's weight. Non-marring floor caps grip floor for stable stationary positioning.



TILT & ROLL shown with optional 20" deep top steps



SPRING LOADED CASTERS MODEL #	TILT & ROLL MODEL #	STEPS INCLUDING TOP STEP	HEIGHT INCHES		BASE W" x L"	WGT Lbs.
			TOP STEP	OVERALL		
16" WIDE STEP						
SS1N*	-	1 STEP NO RAILS	12	12	18 x 20	24
SS2N*	-	2 STEP NO RAILS	19	19	20 x 19	28
SS3N*	-	3 STEP NO RAILS	28.5	28.5	20 x 25	35
SS220	SSTR220	2 STEP	19	49	20 x 19	40
SS320	SSTR320	3 STEP	28.5	58.5	20 x 25	46
SS420	SSTR420	4 STEP	40	73	20 x 38	70
SS520	SSTR520	5 STEP	50	83	20 x 44	77
SS624	SSTR624	6 STEP	60	93	24 x 50	81
SS724	-	7 STEP	70	103	24 x 56	95
24" WIDE STEP						
SS2N30*	-	2 STEP NO RAILS	19	19	30 x 19	40
SS3N30*	-	3 STEP NO RAILS	28.5	28.5	30 x 25	44
SS230	SSTR230	2 STEP	19	49	30 x 19	43
SS330	SSTR330	3 STEP	28.5	58.5	30 x 25	55
SS430	SSTR430	4 STEP	40	73	30 x 38	85
SS530	SSTR530	5 STEP	50	83	30 x 44	92
SS630	SSTR630	6 STEP	60	93	30 x 50	105
SS730	-	7 STEP	70	103	30 x 56	115

* Eligible for UPS. Tilt and roll casters add 5" to base length

FOLD-N-STORE			
MODEL #	STEPS INCLUDING TOP STEP	BASE W" x L"	WGT Lbs.
SSFAWL-5	5 STEP	30 x 48	82
SSFAWL-6	6 STEP	30 x 54	92
SSFAWL-7	7 STEP	30 x 60	103
SSFAWL-8	8 STEP	30 x 66	118
SSFAWL-9	9 STEP	30 x 72	133
SSFAWL-10	10 STEP	30 x 78	149
SSFAWL-11	11 STEP	30 x 84	165
SSFAWL-12	12 STEP	30 x 90	180

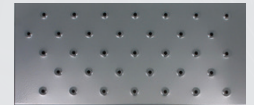
* Fold-N-Store Capacity = 350 Lbs.

STAINLESS STEEL FOLD-N-STORE LADDERS are bead-blasted to provide smooth uniform finish and feature 16" wide steps.

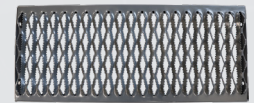
LARGE 10" RUBBER WHEELS



AVAILABLE TREAD TYPES Please specify when ordering



Perforated Tread (P)



Heavy Duty Serrated Grating (G)

SHIP KNOCKED DOWN
For Reduced Shipping Cost & Freight Damage



Note: All stainless ladders are manufactured with industrial grade welds, not recommended for clean rooms.



ADJUSTABLE HEIGHT HEAVY DUTY STEEL WORK PLATFORMS

• 500 LB. CAPACITY

- Gray Powder Coat Finish
- Slip resistant heavy duty serrated grating
- Platforms 24"- 48" long, have 4 legs, longer platforms have 6 legs

PLATFORM
RAISES TO ADJUST
TO THE HEIGHT OF
YOUR WORKING
NEEDS



HEIGHTS FROM 5" to 8"			HEIGHTS FROM 9" to 14"	
MODEL #	W" x L"	WEIGHT	MODEL #	W" x L"
AWP5-2424	24 x 24	38	AWP9-2424	24 x 24
AWP5-2436	24 x 36	52	AWP9-2436	24 x 36
AWP5-2448	24 x 48	66	AWP9-2448	24 x 48
AWP5-2459	24 x 59	80	AWP9-2459	24 x 59
AWP5-2471	24 x 71	106	AWP9-2471	24 x 71
AWP5-2497	24 x 97	138	AWP9-2497	24 x 97

Models Shown are for Serrated Treads

FORK DECK MAINTENANCE PLATFORM

• 1,000 LB. CAPACITY

- Turn your fork truck into a personnel lift. Safe and economical access to heights above those reached by rolling ladders.
- CAL OSHA Models Available
- Rugged steel construction
- Non-skid platform
- 42" high rails with midrails, 4" toeboards & locking gate
- 60" high screen shields operator from fork lift mast
- Safety chain secures platform to mast
- 2" x 7" fork pockets mounted on 29" centers
- 4" swivel casters on base for easy positioning
- Safety orange powder coat
- Ships boxed, easy assembly
- Available fully assembled



MODEL #	L" x W"	WEIGHT
FD-O-C	36" x 36"	141
FD-48-C	48" x 36"	163
FD-40-48	40" x 48"	171
OPTIONAL ACCESSORIES		
Fluorescent Bulb Caddy		26
Tool Tray (Bolt on or Hang on)		14

Ships Boxed for Freight Saving & Quick, Easy Assembly

Adjustable Height Cantilevered Platforms provide safe access to Tank Trucks, Railroad Cars, Conveyor Systems, Machinery or other applications with limited access.

TANK TOP

RAISES TO ADJUST TO THE HEIGHT OF YOUR WORKING NEEDS



Custom Engineered Vertical Access Solutions Available

OPTIONAL ACCESSORIES

- Tool Tray
- Fluorescent tube holder
- Platform duplex receptacle
- Removable 30" extension rail optional (Shown)
- Safety Orange Powder Coat Optional
- For outdoor applications primer undercoat and powder coat finish is recommended.

SPECIAL PURPOSE LADDER AS DEFINED BY ANSI-14.7



SCAN
to see it in action!

MANUALLY PROPELLED TANK TOP ADJUSTABLE HEIGHT WORK PLATFORM

• 300 LB. CAPACITY

- 9' to 13' adjustable work height
- Provides easy access to tank trucks, railroad cars & other cantilevered applications
- Great for clearing snow and ice off tops of trailers
- Manually propelled for use on hard level surfaces
- 48" long cantilevered platform
- Hydraulic hand pump raises & lowers cantilevered platform
- Open serrated grating steps and deck tread
- Slip resistant climbing rungs
- 28"W x 60"L base, fixed outriggers spread to 69"
- Full rails on both sides, gates at each end of platform
- 2 swivel & 2 rigid 8" casters for use on hard surfaces
- Two adjustable stabilizing jacks secure lifts to ground
- Fixed platform height available
- Gray powder coat finish (Standard)

TANK TOP ADJUSTABLE HEIGHT WORK PLATFORM

MODEL #	Platform Max	Height Min	Platform Length	Platform Width	Underclearance Height	Weight Lbs.
TT-913	13' 8"	9' 4"	48"	24"	Adjustable 9' to 13'	1525
TT-913F	13' 8"	9' 4"	48"	24"	Non-Adjustable 9'to 13'	1450
TT-7-11	11' 8"	7' 4"	48"	24"	Adjustable 7' to 11'	1450
TT-11-15	15' 8"	11' 4"	48"	24"	Adjustable 11' to 15'	1625



BALLYLIFT ADJUSTABLE HEIGHT WORK PLATFORM

- **300 LB. CAPACITY**
- Manually propelled maintenance lift providing working heights to 21' high
- Easy to use hydraulic hand pump
- Totally enclosed platform with 42" guardrails, midrails, and gate; 4" toeboards and skid resistant mat
- Two platform styles available:
 - Standard platform with steel deck (BL-315)
 - Cantilevered platform w/aluminum deck (BL-C14)
- Built-in ladder with flat, skid resistant treads and grab rails provides access to platform in fully lowered position while anti-skid rungs provide access to platform when platform is raised
- Compact base frame rolls on two swivel and two rigid 6" casters
- Rails fold down for doorway passage and easy storage
- Base is 32" wide by 65" long, outriggers extend to 68" wide
- Leveling jacks secure lift to the floor
- Hydraulic hand pump provides easy lifting
- Powder coated gray finish
- Meets/exceeds ANSI safety standards

#BL-315



TYPICAL END USE:



Overhead Maintenance



Over Shelving

Cantilevered platform extends
34" beyond base frame



#BL-C14

BALLYLIFT • MANUALLY PROPELLED ONE WORKER LIFTS

MODEL	MODEL #	PLATFORM MAX	PLATFORM MIN	PLATFORM LENGTH	PLATFORM WIDTH	WEIGHT LBS.	WORKING HEIGHT
Standard	BL-315	15'	6' 4"	20"	28"	590	21'
Cantilevered	BL-C14	14'	6' 4"	64"	20"	900	20'

OPTIONAL ACCESSORIES

Tool Tray

Fluorescent tube holder

Platform duplex receptacle

Heavy Duty Mobile Work Platforms increase productivity by simplifying maintenance operations.

- Manufacturers • Assembly Lines • Warehouses
- Distribution Centers • Maintenance Operations
- Stockrooms

Now Available with Side or Rear Exits



HEAVY DUTY MOBILE WORK PLATFORMS

- **RUGGED 2" X 1" RECTANGULAR TUBING BASE FRAME & REAR VERTICAL WELDMENT**
 - **800 LB. CAPACITY**
 - Also available in aluminum and stainless steel
 - Sturdy 1" tubular steel rails
 - Self cleaning slip resistant serrated grating
 - Easy to use heavy duty pedal activated lockstep with large 4" casters
 - 36" high handrails with midrail
 - Complies with applicable OSHA & ANSI standards
 - Gray powder coat finish
 - Ships unassembled in a box
- Designed to accommodate more than one worker.
 - Also available in aluminum and stainless steel.
 - Add platform length to model # when ordering

SINGLE ENTRY WORK PLATFORMS

MODEL WITHOUT HANDRAILS				36" PLATFORM		48" PLATFORM		60" PLATFORM		72" PLATFORM	
MODEL #	STEPS	PLATFORM HEIGHT	PLATFORM WIDTH	WEIGHT	BASE W" X D"	WEIGHT	BASE W" X D"	WEIGHT	BASE W" X D"	WEIGHT	BASE W" X D"
SNR3-24	3 STEP	30"	24"	105	33 x 48	127	33 x 60	149	33 x 72	171	33 x 84
SNR3-36	3 STEP	30"	36"	121	38 x 48	143	38 x 60	150	38 x 72	187	38 x 84
SNR4-24	4 STEP	40"	24"	121	33 x 54	143	33 x 66	165	33 x 78	187	33 x 90
SNR4-36	4 STEP	40"	36"	138	38 x 54	160	38 x 66	182	38 x 78	204	38 x 90
MODEL WITH HANDRAILS											
SEP3-24	3 STEP	30"	24"	136	33 x 48	151	33 x 60	172	33 x 72	193	33 x 84
SEP3-36	3 STEP	30"	36"	153	38 x 48	178	38 x 60	202	38 x 72	226	38 x 84
SEP4-24	4 STEP	40"	24"	151	33 x 54	165	33 x 66	186	33 x 78	207	33 x 90
SEP4-36	4 STEP	40"	36"	167	38 x 54	193	38 x 66	217	38 x 78	240	38 x 90
SEP5-24	5 STEP	50"	24"	165	33 x 60	178	33 x 72	199	33 x 84	220	33 x 96
SEP5-36	5 STEP	50"	36"	182	38 x 60	206	38 x 72	230	38 x 84	253	38 x 96
SEP6-24	6 STEP	60"	24"	178	33 x 66	193	33 x 78	215	33 x 90	237	33 x 102
SEP6-36	6 STEP	60"	36"	198	38 x 66	220	38 x 78	245	38 x 90	270	38 x 102
SEP7-24	7 STEP	70"	24"	193	33 x 73	209	33 x 85	230	33 x 97	251	33 x 108
SEP7-36	7 STEP	70"	36"	215	38 x 73	237	38 x 85	273	38 x 97	308	38 x 108

Add platform overhang length to model number when ordering

EX. SNR3-24-36



HEAVY DUTY DOUBLE ENTRY WORK PLATFORMS

- **RUGGED 2" X 1" RECTANGULAR TUBING BASE FRAME & REAR VERTICAL WELDMENT**
- **800 LB. CAPACITY**
- Also available in aluminum and stainless steel
- **Sturdy 1" tubular steel rails**
- **Self cleaning slip resistant serrated grating**
- Designed to accommodate two workers.
- Also available in aluminum and stainless steel.
- Add platform length to model # when ordering
- 36" high handrails
- Ships unassembled in a box
- Sturdy 1" tubular steel rails with midrail
- Self cleaning slip resistant serrated grating
- Easy to use heavy duty pedal activated lockstep with large 4" casters

AVAILABLE IN STANDARD AND
STAIRWAY SLOPE (SW)



**800 Lb.
Capacity!**

Heavy Duty Mobile Work Platforms increase productivity by simplifying maintenance operations.

DOUBLE ENTRY WORK PLATFORM

				36" PLATFORM		48" PLATFORM		60" PLATFORM		72" PLATFORM	
MODEL #	STEPS	PLATFORM HEIGHT	PLATFORM WIDTH	WEIGHT	BASE W" X D"	WEIGHT	BASE W" X D"	WEIGHT	BASE W" X D"	WEIGHT	BASE W" X D"
DEP3-24	3 STEP	30"	24"	202	33 x 60	220	33 x 72	240	33 x 84	260	33 x 96
DEP3-36	3 STEP	30"	36"	226	38 x 60	242	38 x 72	262	38 x 84	282	38 x 96
DEP4-24	4 STEP	40"	24"	227	33 x 73	245	33 x 85	265	33 x 97	284	33 x 108
DEP4-36	4 STEP	40"	36"	248	38 x 73	264	38 x 85	287	38 x 97	306	38 x 108
DEP5-24	5 STEP	50"	24"	251	33 x 85	271	33 x 97	290	33 x 109	308	33 x 121
DEP5-36	5 STEP	50"	36"	270	38 x 85	292	38 x 97	312	38 x 109	330	38 x 121
DEP6-24	6 STEP	60"	24"	276	33 x 98	295	33 x 110	315	33 x 121	332	33 x 133
DEP6-36	6 STEP	60"	36"	297	38 x 98	314	38 x 110	337	38 x 121	352	38 x 133
DEP7-24	7 STEP	70"	24"	300	33 x 110	319	33 x 122	339	33 x 134	356	33 x 146
DEP7-36	7 STEP	70"	36"	319	38 x 110	341	38 x 122	362	38 x 134	380	38 x 146



STAIR + BRIDGE = CROSSOVER

STAIR SECTIONS (Set of 2) FOR INDUSTRIAL CROSSOVERS

2 to 7 Steps... with choice of widths

# of Steps Each Section	Vertical Clearance Inches	27" Overall Width (Expanded Metal)		31 1/2" Overall Width (Serrated Grating)		38 1/2" Overall Width (Serrated Grating)	
		MODEL #	WEIGHT	MODEL #	WEIGHT	MODEL #	WEIGHT
2	28	CS227	253	CS231	254	CS238	276
3	38	CS327	310	CS331	325	CS338	351
4	48	CS427	378	CS431	393	CS438	428
5	58	CS527	445	CS531	465	CS538	505
6	68	CS627	517	CS631	537	CS638	583
7	78	CS727	600	CS731	630	CS738	680

BRIDGE SECTIONS FOR INDUSTRIAL CROSSOVERS

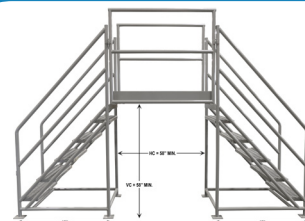
Combine any length with appropriate width stair sections

Length in Inches	Horizontal Clearance Inches	27" Overall Width (Expanded Metal)		31 1/2" Overall Width (Serrated Grating)		38 1/2" Overall Width (Serrated Grating)	
		MODEL #	WEIGHT	MODEL #	WEIGHT	MODEL #	WEIGHT
20	18	-CB227	88	-CB231	95	-CB238	102
30	28	-CB327	111	-CB331	120	-CB338	128
40	38	-CB427	133	-CB431	140	-CB438	153
50	48	-CB527	156	-CB531	165	-CB538	180
60	58	-CB627	195	-CB631	203	-CB638	220

NOTE: For complete model designation use model # prefix for pair of stair sections from "Stair Sections" table, plus model # suffix from "Bridge Sections" table. (i.e., CS327-CB227).

HEAVY DUTY INDUSTRIAL CROSSOVERS

- Three Piece Construction: two stair sections & one bridge
- Heavy 1 1/4" schedule 40 pipe structural frame & rails
- Standard tread: expanded metal or serrated grating (Optional solid steel tread with abrasive mat on bridge available to avoid debris falling onto conveyors)
- Full rails, midrails and toeboards
- Stairway slope allows easier climbing and descent
- Gray powder coat finish
- Each stair section has four legs with large, pre-drilled plates to bolt to the floor
- Available in alternate configurations: U-Shape, Z-Shape, L-Shape, etc.

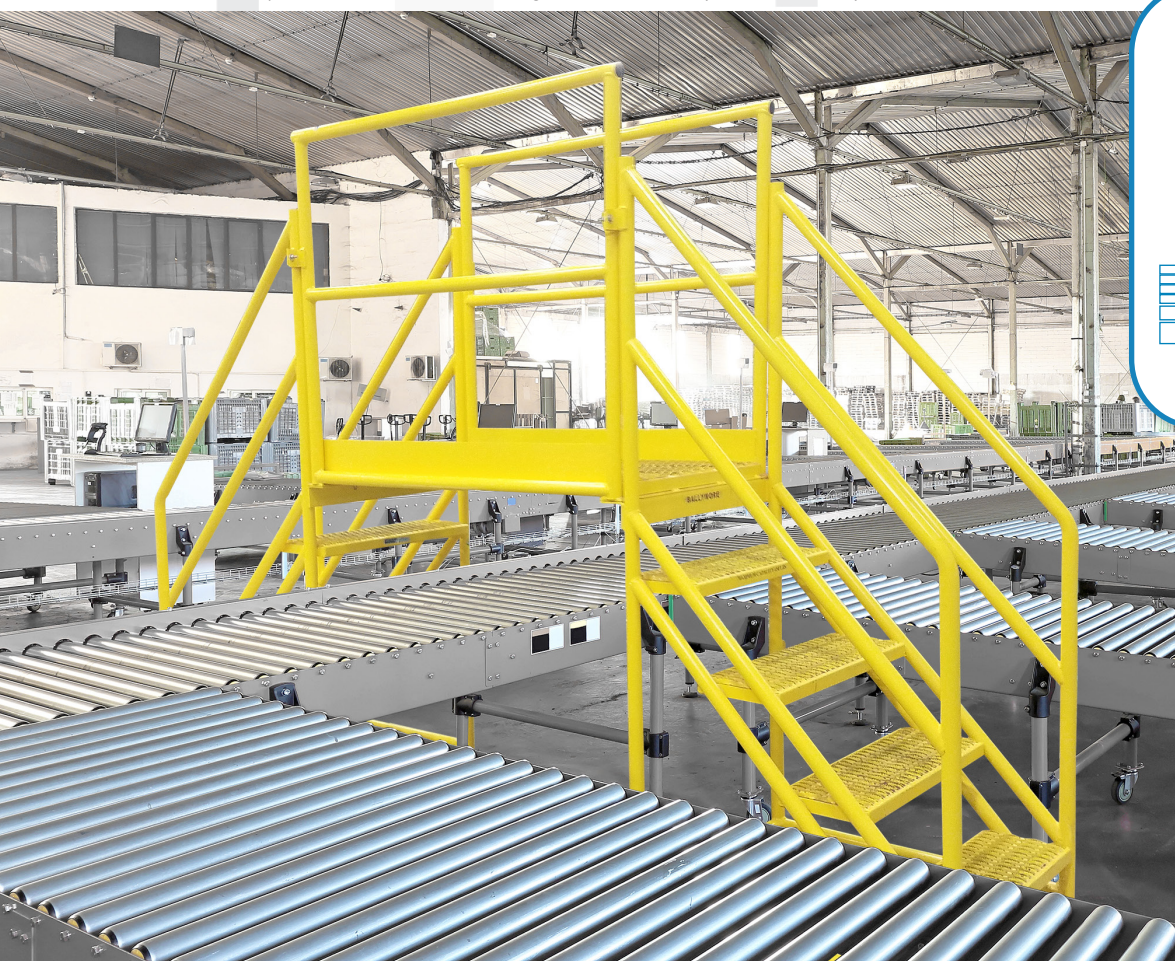


Example Shown: Model CS527-CB627
(27" Overall Width)



Alternate configurations available.
Call for details.

**800 Lb.
Capacity!**



Have You Wondered the Difference the Right Tool Makes?

ERGONOMIC EVALUATOR

Contact us for a free safety evaluation.
1-800-762-8327

Ballymore Safety Products is proud to provide ergonomic evaluation services thru our website. We use the TuMeke suite of ergonomic analysis tools to generate a MSD, Muscular Skeletal Disorder ranking from 1-10 using the REBA, Rapid Entire Body Assessment. The software also generates a NIOSH Lifting Index for the task that is being completed. When a video is provided, a Ballymore Safety Products Consultant will generate an analysis that includes REBA, NIOSH Lifting Index, and a video output with body links highlighted in Red, Yellow, Green indicating the risk level throughout the task.

Ballymore lifting / lowering solutions will be presented along with a predicted reduction in the back injury rate.

The predicted Back Injury Rate Reduction is based on a study performed by Marras from the Ohio State

University Biodynamics Lab. The study involved 353 industrial jobs. The NIOSH lifting index was calculated for the 353 tasks and injury rates were tracked over a 6 year timeframe. A correlation between the NIOSH Lifting Index and injury rates was defined.

Submit a form and upload a video of the task that needs evaluating.

FREE EVALUATION!



With the addition of Certified Safety Professionals to our staff, we are happy to offer assistance with problem solving related to safety issues that are resulting in back injuries for our customers. We have the ability to help safety professionals quantify the difference an intervention will make in terms of the reduction in the rate of back injuries related to a specific task.



PAUL GILKINSON | CERTIFIED SAFETY PROFESSIONAL

Paul is a seasoned safety professional that has worked with a broad range of companies from Fortune 100 companies to locally owned family businesses over the last 30+ years. He has depth of experience in helping companies reduce the risk of severe injuries in the workplace. His past consulting work includes Retail, Manufacturing, Transportation, Construction, and Distribution Centers.



ZACK MOYA | CERTIFIED SAFETY PROFESSIONAL

Zack Moya is a new addition to Ballymore, who arrives with a storied history in Environmental Health & Safety. With over 12+ years, he has worked with a broad range of companies within the Fortune 100 across various industries including but not limited to: Warehousing, Transportation, Retail, Construction & Energy.



STEEL					
Ribbed	Perforated	Grip Strut			
MODEL #	MODEL #	MODEL #	# OF STEPS	TOP STEP HEIGHT	BASE W X L
16" Step Width					
WLSR001163	WLSR001166	WLSR001162	1	10"	19" x 19"
WLSR002163	WLSR002166	WLSR002162	2	20"	20" x 19"
WLSR003163	WLSR003166	WLSR003162	3	30"	20" x 20"
24" Step Width					
WLSR001243	WLSR001246	WLSR001242	1	10"	19" x 19"
WLSR002243	WLSR002246	WLSR002242	2	20"	28" x 19"
WLSR003243	WLSR003246	WLSR003242	3	30"	28" x 27"

Shown With 10" Deep Top Step



ALUMINUM					
Ribbed	Perforated	Grip Strut			
MODEL #	MODEL #	MODEL #	# OF STEPS	TOP STEP HEIGHT	BASE W X L
16" Step Width					
WLAR001164	WLAR001166	WLAR001165	1	10"	19" x 21"
WLAR002164	WLAR002166	WLAR002165	2	20"	19" x 24"
WLAR003164	WLAR003166	WLAR003165	3	30"	21" x 30"
24" Step Width					
WLAR001244	WLAR001246	WLAR001245	1	10"	25" x 21"
WLAR002244	WLAR002246	WLAR002245	2	20"	28" x 24"
WLAR003244	WLAR003246	WLAR003245	3	30"	28" x 30"

Listed With 14" Deep Top Step

STEEL MOBILE STEP STOOLS

- 450 Rated Capacity - Steel
- Standard Deep Top Step 10" – 20" & 30" also available
- Anti-Slip, Perforated or Grip Strut - Steel
- Powder-coated gray finish - Steel
- Complies with applicable OSHA & ANSI standards

ALUMINUM MOBILE STEP STOOLS

- 350 Rated Capacity - Aluminum
- Standard Deep Top Step 14" – 21" & 28" also available
- Solid Ribbed, Perforated or Grip Strut Aluminum
- Standard mill finish - Aluminum
- Complies with applicable OSHA & ANSI standards

MOBILE FOLD-AWAY STEP STAND

- Easily folds for storage
- 10" deep top platform
- 7" deep steps
- 300 lb. Rated Capacity
- Perforated tread
- Ships knocked down
- 1-1/6" tubular steel construction
- Powder-coated gray finish
- Complies with applicable OSHA & ANSI standards



Combines the features and benefits of a rolling ladder and step stand

MODEL #	# of Steps	Overall Height	Platform W x L	Base W x D	Weight
KDMF102166	2	44	16" x 10"	21" x 20"	34
KDMF103166	3	54	16" x 10"	21" x 27"	43
KDMF104166	4	64	16" x 10"	21" x 34"	52

Perforated Tread Only

TILT & ROLL LADDERS

- **450 lb. Rated Capacity**
- Perforated or Grip Strut tread
- Ships unassembled
- 1" tubular steel construction
- Powder-coat gray finish
- Complies with applicable OSHA & ANSI standards



MODEL #	# of Steps	Overall Height	Platform W x L	Base W x D	Weight
KDTF102166	2	62	16" x 10"	23" x 23"	80
KDTF102246	2	62	24" x 10"	31" x 23"	80
KDTF103166	3	72	16" x 10"	24" x 30"	90
KDTF103246	3	72	24" x 10"	31" x 30"	90
KDTF104166	4	82	16" x 10"	24" x 37"	90
KDTF104246	4	82	24" x 10"	31" x 37"	90
KDTF105166	5	92	16" x 10"	24" x 44"	107
KDTF105246	5	92	24" x 10"	31" x 44"	107
KDTF106166	6	102	16" x 10"	27" x 52"	130
KDTF106246	6	102	24" x 10"	35" x 52"	134
KDTF107166	7	112	16" x 10"	31" x 59"	144
KDTF107246	7	112	24" x 10"	37" x 59"	240

Models Listed are for Perforated Treads



ADJUSTABLE HEIGHT MOBILE LADDER

MODEL #	For Step Sizes	Adjustment Range	Overall Height Range	Stowed Height	Platform W x L	Overall Width	Overall Length
ALS5090-M	9	50" - 90"	92" - 132"	94"	24" x 48"	48"	147"
ALS80120-M	12	80" - 120"	122" - 162"	122"	24" x 48"	48"	178"

SHOP AIR HYDRAULIC PUMP							
ALS5090-A	9	50" - 90"	92" - 132"	94"	24" x 48"	48"	147"
ALS80120-A	12	80" - 120"	122" - 162"	122"	24" x 48"	48"	178"

ADJUSTABLE HEIGHT MOBILE LADDER

- **500 lb. Rated Capacity**
- Steps articulate as height adjusts
- 50" - 90" and 80" - 120" range models
- Powered and manual models
- Diamond plate platform performance
- Serrated 11-3/4" deep steps
- 42" guardrails
- Removable chains on right & left guardrails
- 8" x 2" locking casters
- Hybrid aluminum & steel construction
- Complies with applicable OSHA & ANSI standards

MODEL #	# of Steps	Overall Height	Platform W x L	Base W x D	Weight
KDSP106246	6	102	24" x 20"	35" x 60"	230
KDSP107246	7	112	24" x 20"	35" x 66"	244
KDSP108246	8	122	24" x 20"	35" x 73"	303
KDSP109246	9	132	24" x 20"	35" x 78"	332
KDSP110246	10	142	24" x 20"	35" x 92"	281
KDSP111246	11	152	24" x 20"	35" x 92"	306
KDSP112246	12	162	24" x 20"	35" x 99"	416



STOCK PICKING ROLLING LADDERS

- **450 lb. Rated Capacity**
- 2 shelves 6 - 7 step models
- 3 shelves 8 - 12 step models
- 20" deep top platform
- Perforated or Grip Strut tread
- Ships unassembled
- 1" tubular steel construction
- Powder-coat gray finish
- Step lock 6-12 step models
- Complies with applicable OSHA & ANSI standards

INDUSTRIAL ACCESS STAIRWAY LADDERS

- **45° safety angle incline**
- Perforated or Grip Strut tread
- Ships all-welded
- 1.5" round tubular hand rails
- 1" x 2" rectangular frame
- Powder-coated gray finish
- Complies with applicable OSHA & ANSI standards

ALL-TERRAIN LADDERS

- **450 lb. Rated Capacity**
- 10" semi-pneumatic wheels
- Perforated or Grip Strut tread
- Ships unassembled
- 1" tubular steel construction
- Powder-coat finish
- Tools required to fold
- Complies with applicable OSHA & ANSI standards



MODEL #	# of Steps	Overall Height	Platform W x L	Base W x D	Weight
WISS106242	6	95	24" x 10"	27" x 58"	231
WISS107242	7	104.5	24" x 10"	27" x 67.5"	261
WISS108242	8	114	24" x 10"	27" x 68"	280
WISS109242	9	123.5	24" x 10"	27" x 87"	309
WISS110242	10	133	24" x 10"	27" x 96"	333
WISS111242	11	142.5	24" x 10"	27" x 105"	362
WISS112242	12	152	24" x 10"	27" x 115"	381

Models Listed are for Grip Treads



MODEL #	# of Steps	Overall Height	Platform W x L	Base W x D	Weight
KDRF103166	3	72	16" x 10"	29" x 32.5"	90
KDRF104166	4	82	16" x 10"	29" x 39.5"	100
KDRF105166	5	92	16" x 10"	31" x 46.5"	112
KDRF106166	6	102	16" x 10"	31" x 54.5"	143
KDRF107166	7	112	16" x 10"	31" x 61.5"	156
KDRF108166	8	122	16" x 10"	37" x 68.5"	206
KDRF109166	9	132	16" x 10"	37" x 73.5"	225
KDRF110166	10	142	16" x 10"	37" x 80.5"	245
KDRF111166	11	152	16" x 10"	37" x 87.5"	254
KDRF112166	12	162	16" x 10"	37" x 94.5"	275

Models Listed are for Perforated Treads

STEEL ROLLING SAFETY LADDERS

- **450 lb. Rated Capacity**
- Perforated or Grip Strut tread
- Ships unassembled
- 1" tubular steel construction
- Powder-coat gray finish
- Spring-loaded casters 2-5 step models
- Step lock 6-16 step models
- Complies with applicable OSHA & ANSI standards



POWDER
COATED
TOUGH™



ALL DIRECTION ROLLING LADDERS

- **450 lb. Rated Capacity**
- Ladder turns within its own radius
- Perforated or Grip Strut tread
- Ships unassembled
- 1" tubular steel rails
- Powder-coat gray finish
- Step lock all models
- Complies with applicable OSHA & ANSI standards



MODEL #	# of Steps	Platform Height	OVERALL HEIGHT	Platform W x L	Base W x D	Weight
16" Step Width						
KDSR102166	2	20"	62"	16" x 10"	21" x 21"	77
KDSR103166	3	30"	72"	16" x 10"	24" x 28"	89
KDSR104166	4	40"	82"	16" x 10"	24" x 35"	100
KDSR105166	5	50"	86"	16" x 10"	24" x 42"	110
KDSR106166	6	60"	102"	16" x 10"	27" x 50"	159
KDSR107166	7	70"	112"	16" x 10"	27" x 57"	155
24" Step Width						
KDSR102246	2	20"	62"	24" x 10"	28" x 21"	85
KDSR103246	3	30"	72"	24" x 10"	30" x 28"	96
KDSR104246	4	40"	82"	24" x 10"	30" x 35"	109
KDSR105246	5	50"	86"	24" x 10"	30" x 42"	121
KDSR106246	6	60"	102"	24" x 10"	35" x 50"	176
KDSR107246	7	70"	112"	24" x 10"	35" x 57"	188
KDSR108246	8	80"	122"	24" x 10"	35" x 64"	245
KDSR109246	9	90"	132"	24" x 10"	35" x 69"	256
KDSR110246	10	100"	142"	24" x 10"	35" x 76"	281
KDSR111246	11	110"	152"	24" x 10"	35" x 83"	296
KDSR112246	12	120"	162"	24" x 10"	35" x 90"	323
KDSR113246	13	130"	172"	24" x 10"	40" x 96"	341
KDSR114246	14	140"	182"	24" x 10"	40" x 103"	363
KDSR115246	15	150"	192"	24" x 10"	40" x 110"	383

NOTE: Models Listed are for Perforated Treads
Specify Tread Type when ordering

MODEL #	# OF STEPS	OVERALL HEIGHT	PLATFORM W x L	BASE W x D	WEIGHT
KDED107246	7	112"	24" x 10"	35" x 57"	216
KDED108246	8	122"	24" x 10"	35" x 64"	273
KDED109246	9	132"	24" x 10"	35" x 69"	282
KDED110246	10	142"	24" x 10"	35" x 76"	311
KDED111246	11	152"	24" x 10"	35" x 83"	334
KDED112246	12	162"	24" x 10"	35" x 90"	360
KDED113246	13	172"	24" x 10"	35" x 96"	387
KDED114246	14	182"	24" x 10"	40" x 103"	411
KDED115246	15	192"	24" x 10"	40" x 110"	454

NOTE: Models Listed are for Perforated Treads

50° SAFETY ANGLE

FORWARD DESCENT



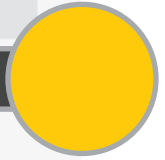
SAFETY ANGLE ROLLING LADDERS

- 450 lb. Rated Capacity
- 17" deep top platform
- 50° safety angle incline
- Perforated or Grip strut tread
- Ships unassembled
- 1" tubular steel rails
- 1" x 2" reinforced back & bottom frame
- 8.5" deep steps, 10" deep 1st step
- Powder-coat gray finish
- Step lock on all models
- Complies with applicable OSHA & ANSI standards

MODEL #	# of Steps	Overall Height	Platform W x L	Base W x D	Weight
KDEC103166	3	72	16" x 17"	27" x 41"	122
KDEC103246	3	72	24" x 17"	35" x 41"	139
KDEC104166	4	82	16" x 17"	27" x 49"	137
KDEC104246	4	82	24" x 17"	35" x 49"	150
KDEC105166	5	92	16" x 17"	27" x 58"	170
KDEC105246	5	92	24" x 17"	35" x 58"	185
KDEC106166	6	102	16" x 17"	27" x 66"	184
KDEC106246	6	102	24" x 17"	35" x 66"	201
KDEC107166	7	112	16" x 17"	27" x 74"	228
KDEC107246	7	112	24" x 17"	35" x 74"	245
KDEC108246	8	122	24" x 17"	35" x 82"	391
KDEC109246	9	132	24" x 17"	35" x 91"	306
KDEC110246	10	142	24" x 17"	35" x 99"	320
KDEC111246	11	152	24" x 17"	35" x 107"	352
KDEC112246	12	162	24" x 17"	35" x 116"	377
KDEC113246	13	172	24" x 17"	40" x 124"	405
KDEC114246	14	182	24" x 17"	40" x 132"	425
KDEC115246	15	192	24" x 17"	40" x 141"	521

Models Listed are for Perforated Treads

Also Available in Safety Yellow



ALL-DIRECTIONAL SAFETY ANGLE ROLLING LADDERS

- 450 lb. Rated Capacity
- Ladder turns within its own radius
- 17" deep top platform
- Gradual descent 50° incline
- Perforated or Grip Strut tread
- Ships unassembled
- 1" tubular steel rails
- 1" x 2" reinforced back & bottom frame
- 8.5" deep steps, 10" deep 1st step
- Powder-coated gray finish
- Step lock on all models
- Complies with applicable OSHA & ANSI standards



MODEL #	# of Steps	Overall Height	Platform W x L	Base W x D	Weight
KDAD107246	7	112	24" x 17"	35" x 74"	274
KDAD108246	8	122	24" x 17"	35" x 82"	310
KDAD109246	9	132	24" x 17"	35" x 91"	336
KDAD110246	10	142	24" x 17"	35" x 99"	350
KDAD111246	11	152	24" x 17"	35" x 107"	383
KDAD112246	12	162	24" x 17"	35" x 116"	408
KDAD113246	13	172	24" x 17"	40" x 124"	430
KDAD114246	14	182	24" x 17"	40" x 132"	525
KDAD115246	15	192	24" x 17"	40" x 141"	569

Ideal for ease of maneuvering in tight spaces or narrow aisles.

			20" DEEP TOP STEP				30" DEEP TOP STEP			
# of Steps	Platform Height	Overall Height	MODEL #	Platform W x L	Base W x D	Wgt lbs	MODEL #	Platform W x L	Base W x D	Wgt lbs
			16" Step Width				16" Step Width			
2	20"	62	KDSR102166-D2	16" x 20"	21" x 31"	73	KDSR102166-D3	16" x 30"	21" x 41"	77
3	30"	72	KDSR103166-D2	16" x 20"	24" x 38"	93	KDSR103166-D3	16" x 30"	24" x 48"	97
4	40"	82	KDSR104166-D2	16" x 20"	24" x 45"	104	KDSR104166-D3	16" x 30"	24" x 55"	108
5	50"	92	KDSR105166-D2	16" x 20"	24" x 52"	122	KDSR105166-D3	16" x 30"	24" x 62"	134
6	60"	102	KDSR106166-D2	16" x 20"	27" x 60"	160	KDSR106166-D3	16" x 30"	27" x 70"	180
7	70"	112	KDSR107166-D2	16" x 20"	27" x 67"	180	KDSR107166-D3	16" x 30"	27" x 77"	190
			24" Step Width				24" Step Width			
2	20"	62	KDSR102246-D2	24" x 20"	28" x 31"	91	KDSR102246-D3	24" x 30"	28" x 41"	97
3	30"	72	KDSR103246-D2	24" x 20"	30" x 38"	102	KDSR103246-D3	24" x 30"	30" x 48"	108
4	40"	82	KDSR104246-D2	24" x 20"	30" x 45"	149	KDSR104246-D3	24" x 30"	30" x 55"	115
5	50"	92	KDSR105246-D2	24" x 20"	30" x 52"	125	KDSR105246-D3	24" x 30"	30" x 62"	149
6	60"	102	KDSR106246-D2	24" x 20"	35" x 60"	176	KDSR106246-D3	24" x 30"	35" x 70"	186
7	70"	112	KDSR107246-D2	24" x 20"	35" x 67"	214	KDSR107246-D3	24" x 30"	35" x 77"	224
8	80"	122	KDSR108246-D2	24" x 20"	35" x 74"	227	KDSR108246-D3	24" x 30"	35" x 84"	258
9	90"	132	KDSR109246-D2	24" x 20"	35" x 79"	277	KDSR109246-D3	24" x 30"	35" x 89"	308
10	100"	142	KDSR110246-D2	24" x 20"	35" x 86"	308	KDSR110246-D3	24" x 30"	35" x 96"	328
11	110"	152	KDSR111246-D2	24" x 20"	35" x 93"	322	KDSR111246-D3	24" x 30"	35" x 103"	338
12	120"	162	KDSR112246-D2	24" x 20"	35" x 100"	348	KDSR112246-D3	24" x 30"	35" x 100"	358
13	130"	172	KDSR113246-D2	24" x 20"	40" x 106"	370	KDSR113246-D3	24" x 30"	40" x 116"	380
14	140"	182	KDSR114246-D2	24" x 20"	40" x 113"	395	KDSR114246-D3	24" x 30"	40" x 123"	405
15	150"	192	KDSR115246-D2	24" x 20"	40" x 120"	416	KDSR115246-D3	24" x 30"	40" x 130"	436

NOTE: Models Listed are for Perforated Treads
Specify Tread Type when ordering

Spring Loaded Rear Gate Opens Inward.

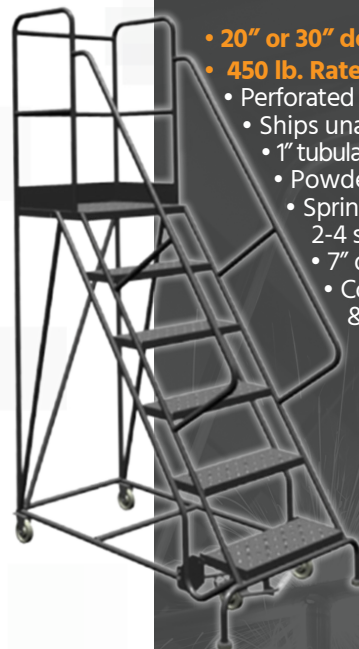


# OF STEPS	OVERALL HEIGHT	PLATFORM W x L	BASE W x D	WEIGHT	MODEL # PERFORATED	MODEL # GRIP STRUT
6	106	24" x 30"	35" x 70"	280	KDSR106246-XR	KDSR106242-XR
7	116	24" x 30"	35" x 77"	300	KDSR107246-XR	KDSR107242-XR
8	126	24" x 30"	35" x 84"	325	KDSR108246-XR	KDSR108242-XR
9	136	24" x 30"	35" x 89"	361	KDSR109246-XR	KDSR109242-XR
10	146	24" x 30"	35" x 96"	350	KDSR110246-XR	KDSR110242-XR
11	156	24" x 30"	35" x 103"	401	KDSR111246-XR	KDSR111242-XR
12	166	24" x 30"	35" x 110"	415	KDSR112246-XR	KDSR112242-XR
13	176	24" x 30"	40" x 116"	552	KDSR113246-XR	KDSR113242-XR
14	186	24" x 30"	40" x 123"	472	KDSR114246-XR	KDSR114242-XR
15	196	24" x 30"	40" x 130"	575	KDSR115246-XR	KDSR115242-XR



STEEL DEEP TOP STEP LADDERS

- 20" or 30" deep top platform
- 450 lb. Rated Capacity
- Perforated or Grip Strut tread
- Ships unassembled
- 1" tubular steel construction
- Powder-coat gray finish
- Spring-loaded casters
- 2-4 step models
- 7" deep steps
- Complies with OSHA & ANSI standards



GATEWAY REAR EXIT ROLLING LADDER

- Large 30" deep top platform
- 450 lb. Rated Capacity
- Perforated or Grip Strut tread
- Ships unassembled
- 1" tubular steel construction
- Powder-coat gray finish
- Step lock standard on all models
- Complies with applicable OSHA & ANSI standards

POWDER COATED STEEL

600# HEAVY DUTY ROLLING LADDERS

- **600 lb. Rated Capacity**
- Additional bracing
- Perforated or Grip Strut tread
- Ships unassembled
- 1" tubular steel construction
- Powder-coated gray finish
- Step lock on all models
- Complies with applicable OSHA & ANSI standards



MODEL #	# OF STEPS	OVERALL HEIGHT	PLATFORM W x L	BASE W x D	WEIGHT
KDHD106246	6	102	24" x 10"	35" x 70"	197
KDHD107246	7	112	24" x 10"	35" x 57"	212
KDHD108246	8	122	24" x 10"	35" x 64"	275
KDHD109246	9	132	24" x 10"	35" x 69"	297
KDHD110246	10	142	24" x 10"	35" x 76"	317
KDHD111246	11	152	24" x 10"	35" x 83"	337
KDHD112246	12	162	24" x 10"	35" x 90"	364



600# HEAVY DUTY SAFETY ANGLE ROLLING LADDERS

- **600 lb. Rated Capacity**
- Additional bracing
- Safety angle incline
- Perforated or Grip strut tread
- Ships unassembled
- 1" tubular steel construction
- 1" x 2" reinforced back & bottom frame
- Powder coat gray finish
- Step lock on all models
- Complies with applicable OSHA & ANSI standards



MODEL #	# of Steps	Overall Height	Platform W x L	Base W x D	Weight
KDHS106246	6	102	24" x 17"	35" x 66"	215
KDHS107246	7	112	24" x 17"	35" x 66"	257
KDHS108246	8	122	24" x 17"	35" x 82"	295
KDHS109246	9	132	24" x 17"	35" x 91"	322
KDHS110246	10	142	24" x 17"	35" x 99"	337
KDHS111246	11	152	24" x 17"	35" x 107"	371
KDHS112246	12	162	24" x 17"	35" x 116"	397





ALUMINUM

TRIARC

ALUMINUM LADDERS



Standard

Deep Top Step

- **350 Lb. Capacity**
- Solid Ribbed, Perforated or Grip Strut tread
- 3/4" Sch. 40, 1-1/16" O.D. pipe
- Standard mill finish
- Spring-loaded caters 2-7 step models
- Step lock 8-12 models
- Complies with applicable OSHA & ANSI standards

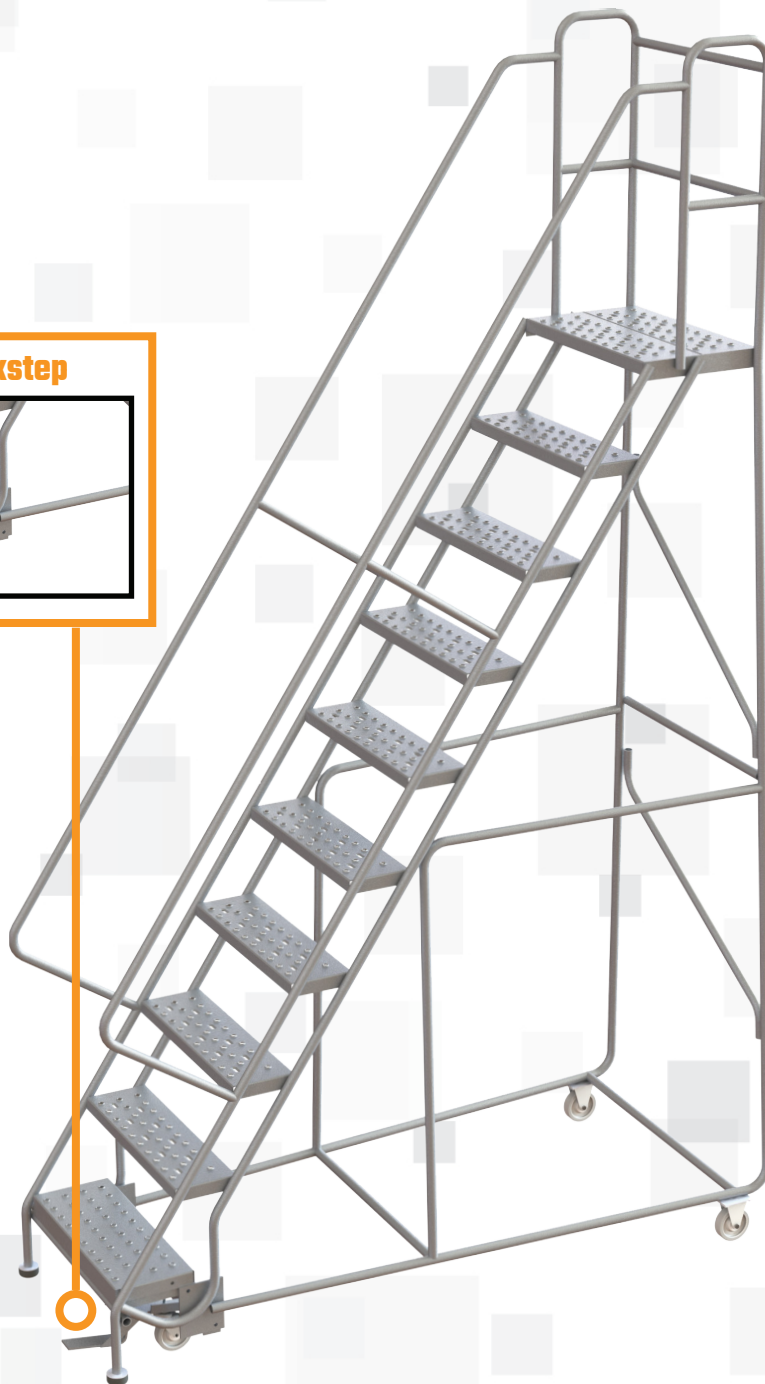
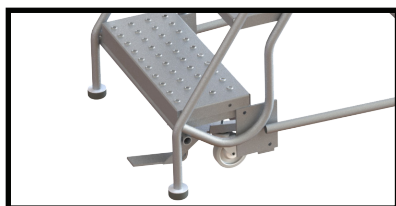
# of Steps	Overall Height	Platform W x L	Base W x D	MODEL #	Weight	MODEL #	Weight	MODEL #	Weight
				14" Deep Top Step		21" Deep Top Step		28" Deep Top Step	
16" Step Width									
2	52	16" x 14"	20" x 23"	WLAR102165	27	WLAR102165-D4	24	WLAR102165-D5*	27
3	62	16" x 14"	22" x 31"	WLAR103165	33	WLAR103165-D4	30	WLAR103165-D5*	33
4	72	16" x 14"	22" x 37"	WLAR104165	39	WLAR104165-D4	36	WLAR104165-D5*	39
5	82	16" x 14"	22" x 44"	WLAR105165	43	WLAR105165-D4	45	WLAR105165-D5	48
6	92	16" x 14"	26" x 51"	WLAR106165	50	WLAR106165-D4	52	WLAR106165-D5	50
7	102	16" x 14"	26" x 57"	WLAR107165	56	WLAR107165-D4	58	WLAR107165-D5	56
24" Step Width									
2	52	24" x 14"	29" x 23"	WLAR102245	32	WLAR102245-D4	28	WLAR102245-D5*	32
3	62	24" x 14"	29" x 31"	WLAR103245	35	WLAR103245-D4	31	WLAR103245-D5*	35
4	72	24" x 14"	32" x 37"	WLAR104245	45	WLAR104245-D4	41	WLAR104245-D5*	45
5	82	24" x 14"	32" x 44"	WLAR105245	50	WLAR105245-D4	51	WLAR105245-D5	50
6	92	24" x 14"	24" x 14"	WLAR106245	57	WLAR106245-D4	58	WLAR106245-D5	57
7	102	24" x 14"	32" x 57"	WLAR107245	64	WLAR107245-D4	65	WLAR107245-D5	64
8	112	24" x 14"	36" x 66"	WLAR108245	80	WLAR108245-D4	81	WLAR108245-D5	80
9	122	24" x 14"	36" x 72"	WLAR109245	87	WLAR109245-D4	85	WLAR109245-D5	87
10	132	24" x 14"	36" x 79"	WLAR110245	93	WLAR110245-D4	94	WLAR110245-D5	93
11	142	24" x 14"	38" x 86"	WLAR111245	100	WLAR111245-D4	101	WLAR111245-D5	100
				WLAR112245	112				

NOTE: Models Listed are for Grip Strut Treads

ALUMINUM LOCKSTEP LADDERS

- **450 lb. Rated Capacity**
- 24" wide steps
- 7" deep treads (56° models)
- 10" deep platform (56° models)
- 14" standard deep top step
- Also available with a 21" or 28" deep top step
- Lockstep standard on all models
- Aluminum mill finish
- Ships fully assembled
- Complies with applicable OSHA & ANSI standards

Standard Lockstep



ALUMINUM LOCKSTEP LADDERS

Model # Ribbed	Weight	Model # Serrated	Weight	Model # Perforated	Weight	# of Steps	Step Width	Overall Height	Platform W x L	Base W x D
WLAR108244	89	WLAR108245	76	WLAR108246	76	8	24	112"	24" x 14"	34 x 72
WLAR109244	95	WLAR109245	81	WLAR109246	81	9	24	126"	24" x 14"	36 x 73
WLAR110244	103	WLAR110245	90	WLAR110246	90	10	24	136"	24" x 14"	36 x 81
WLAR111244	106	WLAR111245	98	WLAR111246	98	11	24	146"	24" x 14"	38 x 87
WLAR112244	110	WLAR112245	110	WLAR112246	110	12	24	156"	24" x 14"	39 x 93

FIXED STEEL LADDERS

- Side rail 2 - 1/2" x 3/8" flat bar
- Solid round 3/4" rungs
- 12" spacing between rungs
- 18" ladder width
- 42" guardrails on walk-thru models
- Powder-coat yellow finish
- Ships in components for freight savings
- Complies with applicable OSHA & ANSI standards

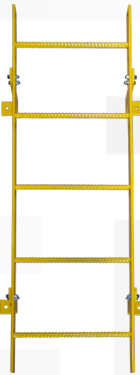


**Uncaged ships
in a box for huge
freight savings!**

WALK-THRU



STANDARD



Without Cage/
Walk Thru



Cage/Walk
Thru All Welded



FIXED STEEL LADDER

WITHOUT CAGE				WITH CAGE			
Standard	Walk-Thru			Standard	Walk-Thru		
Tri-Arc Model #	Tri-Arc Model #	# of Rungs	Length top to bottom rung	Tri-Arc Model #	Tri-Arc Model #	# of Rungs	Length top to bottom rung
WLFS0104-Y	WLFS0204-Y	4	3'	WLFC1111-Y	WLFC1211-Y	11	10'
WLFS0105-Y	WLFS0205-Y	5	4'	WLFC1112-Y	WLFC1212-Y	12	11'
WLFS0106-Y	WLFS0206-Y	6	5'	WLFC1113-Y	WLFC1213-Y	13	12'
WLFS0107-Y	WLFS0207-Y	7	6'	WLFC1114-Y	WLFC1214-Y	14	13'
WLFS0108-Y	WLFS0208-Y	8	7'	WLFC1115-Y	WLFC1215-Y	15	14'
WLFS0109-Y	WLFS0209-Y	9	8'	WLFC1116-Y	WLFC1216-Y	16	15'
WLFS0110-Y	WLFS0210-Y	10	9'	WLFC1117-Y	WLFC1217-Y	17	16'
WLFS0111-Y	WLFS0211-Y	11	10'	WLFC1118-Y	WLFC1218-Y	18	17'
WLFS0112-Y	WLFS0212-Y	12	11'	WLFC1119-Y	WLFC1219-Y	19	18'
WLFS0113-Y	WLFS0213-Y	13	12'	WLFC1120-Y	WLFC1220-Y	20	19'
WLFS0114-Y	WLFS0214-Y	14	13'	WLFC1121-Y	WLFC1221-Y	21	20'
WLFS0115-Y	WLFS0215-Y	15	14'	WLFC1122-Y	WLFC1222-Y	22	21'
WLFS0116-Y	WLFS0216-Y	16	15'	WLFC1123-Y	WLFC1223-Y	23	22'
WLFS0117-Y	WLFS0217-Y	17	16'	WLFC1124-Y	WLFC1224-Y	24	23'
WLFS0118-Y	WLFS0218-Y	18	17'	WLFC1125-Y	WLFC1225-Y	25	24'
WLFS0119-Y	WLFS0219-Y	19	18'	WLFC1126-Y	WLFC1226-Y	26	25'
WLFS0120-Y	WLFS0220-Y	20	19'	WLFC1127-Y	WLFC1227-Y	27	26'
				WLFC1128-Y	WLFC1228-Y	28	27'
				WLFC1129-Y	WLFC1229-Y	29	28'
				WLFC1130-Y	WLFC1230-Y	30	29'

FIXED LADDER ACCESS RESTRICTION OPTIONS

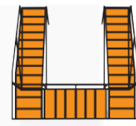
Guard Door closes off entry onto a fixed ladder. Cage Door closes off entry at bottom of cage.

Guard Door

OPFS03-Y

Cage Door

OPFS04-Y



U-DESIGN

CONFIGURABLE LADDERS

U-DESIGN CANTILEVER SERIES LADDERS

- 300 lb. Rated Capacity
- 24" wide steps & platform
- Powder-coated yellow finish
- Meets OSHA 1910.29 & ANSI A14.7



Unsupported Cantilever

- Platform heights from 50" (5 step) to 90" (9 step)
- Cantilevered platform is available up to 40" long
- Counterweighted for a 300 lb. capacity

Supported Cantilever

- Same features as the Unsupported Cantilever
- Support leg rolls under obstructions like tanks, trucks, or machines
- Allows cantilevered access without added counterweight

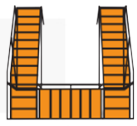


PERFORATED

MODEL #	Platform Height	Clear Height (to floor)	Overall Height	Platform W x L	Base W x D	Weight
20" Cantilever Length						
SUPPORTED						
UCS500520246	50"	48"	92"	24" x 20"	41" x 64"	296
UCS500620246	60"	58"	102"	24" x 20"	41" x 72"	362
UCS500720246	70"	68"	112"	24" x 20"	41" x 81"	350
UCS500820246	80"	78"	122"	24" x 40"	41" x 89"	426
UCS500920246	90"	88"	132"	24" x 40"	41" x 97"	449
UNSUPPORTED						
UCU500520246	50"	48"	92"	24" x 20"	30" x 64"	619
UCU500620246	60"	58"	102"	24" x 20"	30" x 72"	575
UCU500720246	70"	68"	112"	24" x 20"	30" x 81"	606
UCU500820246	80"	78"	122"	24" x 20"	30" x 89"	769
UCU500920246	90"	88"	132"	24" x 20"	30" x 117"	602
30" Cantilever Length						
SUPPORTED						
UCS500530246	50"	58"	102"	24" x 30"	41" x 82"	320
UCS500630246	60"	58"	102"	24" x 30"	41" x 82"	388
UCS500730246	70"	68"	112"	24" x 30"	41" x 91"	419
UCS500830246	80"	78"	122"	24" x 30"	41" x 99"	452
UCS500930246	90"	88"	132"	24" x 30"	41" x 107"	475
UNSUPPORTED						
UCU500530246	50"	48"	92"	24" x 30"	30" x 74"	797
UCU500630246	60"	58"	102"	24" x 30"	30" x 82"	673
UCU500730246	70"	68"	112"	24" x 30"	30" x 91"	704
UCU500830246	80"	78"	122"	24" x 30"	30" x 99"	647
UCU500930246	90"	88"	132"	24" x 30"	30" x 107"	680
40" Cantilever Length						
SUPPORTED						
UCS500540246	50"	48"	92"	24" x 40"	41" x 64"	356
UCS500640246	60"	58"	102"	24" x 40"	41" x 92"	410
UCS500740246	70"	68"	112"	24" x 40"	41" x 101"	435
UCS500840246	80"	78"	122"	24" x 40"	41" x 109"	476
UCS500940246	90"	88"	132"	24" x 40"	41" x 117"	491
UNSUPPORTED						
UCU500540246	50"	48"	92"	24" x 40"	30" x 84"	893
UCU500640246	60"	58"	102"	24" x 40"	30" x 92"	839
UCU500740246	70"	68"	112"	24" x 40"	30" x 101"	800
UCU500840246	80"	78"	122"	24" x 40"	30" x 109"	743
UCU500940246	90"	88"	132"	24" x 40"	30" x 97"	776

GRIP STRUT

MODEL #	Platform Height	Clear Height (to floor)	Overall Height	Platform W x L	Base W x D	Weight
20" Cantilever Length						
SUPPORTED						
UCS500520242	50"	48"	92"	24" x 20"	41" x 64"	306
UCS500620242	60"	58"	102"	24" x 20"	41" x 72"	362
UCS500720242	70"	68"	112"	24" x 20"	41" x 81"	350
UCS500820242	80"	78"	122"	24" x 20"	41" x 109"	426
UCS500920242	90"	88"	132"	24" x 20"	41" x 97"	449
UNSUPPORTED						
UCU500520242	50"	48"	92"	24" x 20"	30" x 64"	619
UCU500620242	60"	58"	102"	24" x 20"	30" x 72"	575
UCU500720242	70"	68"	112"	24" x 20"	30" x 81"	606
UCU500820242	80"	78"	122"	24" x 20"	30" x 89"	769
UCU500920242	90"	88"	132"	24" x 20"	30" x 117"	602
30" Cantilever Length						
SUPPORTED						
UCS500530242	50"	48"	92"	24" x 30"	41" x 74"	272
UCS500630242	60"	58"	102"	24" x 30"	41" x 82"	388
UCS500730242	70"	68"	112"	24" x 30"	41" x 91"	419
UCS500830242	80"	78"	122"	24" x 30"	41" x 99"	452
UCS500930242	90"	88"	132"	24" x 30"	41" x 107"	475
UNSUPPORTED						
UCU500530242	50"	48"	92"	24" x 30"	30" x 74"	797
UCU500630242	60"	58"	102"	24" x 30"	30" x 82"	673
UCU500730242	70"	68"	112"	24" x 30"	30" x 91"	704
UCU500830242	80"	78"	122"	24" x 30"	30" x 99"	647
UCU500930242	90"	88"	132"	24" x 30"	30" x 107"	680
40" Cantilever Length						
SUPPORTED						
UCS500540242	50"	48"	92"	24" x 40"	41" x 64"	356
UCS500640242	60"	58"	102"	24" x 40"	41" x 92"	410
UCS500740242	70"	68"	112"	24" x 40"	41" x 101"	435
UCS500840242	80"	78"	122"	24" x 40"	41" x 109"	476
UCS500940242	90"	88"	132"	24" x 40"	41" x 117"	491
UNSUPPORTED						
UCU500540242	50"	48"	92"	24" x 40"	30" x 84"	893
UCU500640242	60"	58"	102"	24" x 40"	30" x 92"	839
UCU500740242	70"	68"	112"	24" x 40"	30" x 101"	800
UCU500840242	80"	78"	122"	24" x 40"	30" x 109"	743
UCU500940242	90"	88"	132"	24" x 40"	30" x 97"	776



U-DESIGN

CONFIGURABLE LADDERS

Configure a steel rolling ladder exactly how you want it by choosing from the feature kits including the deep top kit, the all-directional kit and the stock picking kit. Combine features to build the most productive ladder for your needs.



Start with a
basic ladder



Add a
Deep Top Kit



Add an
All-directional Kit



Add a
Stock Picking Kit

DEEP TOP PLATFORM KIT

MODEL #	DESCRIPTION
UP20DTK	Adds 10" additional length to top platform (Standard: 20" or Safety Angle: 27" Total)
UP30DTK	Adds 20" additional length to top platform (Standard: 30" or Safety Angle: 37" Total)

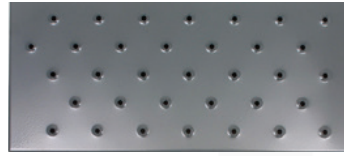
ALL-DIRECTION MANEUVERABILITY KIT

MODEL #	KIT MATCHING	DESCRIPTION
U4AD0612	6-12 Step Models	Enables the ladder to turn within its own radius
U4AD1315	13-15 Step Models	

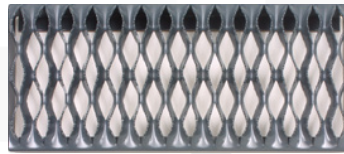
STOCK PICKING SHELF KIT

MODEL #	KIT MATCHING	DESCRIPTION
USPK2	6-7 Step Models	2 - 50 lb. Capacity Shelves
USPK3	8-15 Step Models	3 - 50 lb. Capacity Shelves

Models Listed are for Perforated Treads



Perforated Tread (6)



Grip Strut (2)

TRIARC

U-DESIGN CUSTOMIZABLE LADDERS

- **450 lb. Rated Capacity**
- 24" wide steps
- 7" deep treads (56° models)
- 10" deep platform (56° models)
- 17" deep platform (50° models)
- 8.5" deep treads (56° models)
- Step-lock standard on all models
- Powder-coated gray finish
- Ships unassembled
- Complies with applicable OSHA & ANSI standards

STANDARD ANGLE BASE LADDER

MODEL #	# of Steps	Platform Height	Overall Height	Step Width	Platform W x L	Base W x D	Weight
UKDSR106246	6	60"	102	24"	24" x 10"	35" x 50"	201
UKDSR107246	7	70"	112	24"	24" x 10"	35" x 57"	245
UKDSR108246	8	80"	122	24"	24" x 10"	35" x 64"	281
UKDRS109246	9	90"	132	24"	24" x 10"	35" x 69"	306
UKDRS110246	10	100"	142	24"	24" x 10"	35" x 76"	320
UKDRS111246	11	110"	152	24"	24" x 10"	35" x 83"	352
UKDRS112246	12	120"	162	24"	24" x 10"	35" x 90"	377
UKDSR113246	13	130"	172	24"	24" x 10"	40" x 96"	405
UKDSR114246	14	140"	182	24"	24" x 10"	40" x 103"	425
UKDSR115246	15	150"	192	24"	24" x 10"	40" x 110"	521

Models Shown are for Perforated Treads

SAFETY ANGLE BASE LADDER

MODEL #	# of Steps	Platform Height	Overall Height	Step Width	Platform W x L	Base W x D	Weight
UKDEC106246	6	60"	102	24"	24" x 17"	35" x 66"	201
UKDEC107246	7	70"	112	24"	24" x 17"	35" x 74"	245
UKDEC108246	8	80"	122	24"	24" x 17"	35" x 82"	281
UKDEC109246	9	90"	132	24"	24" x 17"	35" x 91"	306
UKDEC110246	10	100"	142	24"	24" x 17"	35" x 99"	320
UKDEC111246	11	110"	152	24"	24" x 17"	35" x 107"	352
UKDEC112246	12	120"	162	24"	24" x 17"	35" x 116"	377
UKDEC113246	13	130"	172	24"	24" x 17"	40" x 124"	405
UKDEC114246	14	140"	182	24"	24" x 17"	40" x 132"	425
UKDEC115246	15	150"	192	24"	24" x 17"	40" x 141"	521

HEAVY DUTY INDUSTRIAL CROSSOVERS

- Combine 20" or 30" Bridge spans to create desired horizontal clearance
- Leg kit required for spans greater than 90" in length
- Rail Kit item URK used in place of ladder to close off platform opening



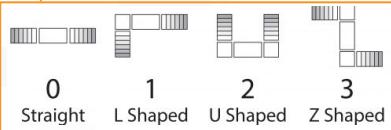
CONFIGURATOR



-DESIGN
CONFIGURABLE LADDERS

EXTRA HEAVY DUTY
1,000 lbs Capacity

1. Select an incline
2. Select a stair height
3. Select a bridge span
4. Select a configuration



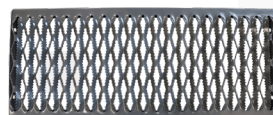
USING TURN PLATFORMS

LADDER OPTIONS								
MODEL #	# of Steps	Step Width	Step Depth	Platform Height	Overall Height	Base Width	Vertical Clearance	Weight
50 Incline								
UCL5003246	3	24"	10"	30"	72"	26.5"	28"	128
UCL5004246	4	24"	10"	40"	82"	26.5"	38"	144
UCL5005246	5	24"	10"	50"	92"	26.5"	48"	200
UCL5006246	6	24"	10"	60"	102"	26.5"	58"	226
UCL5007246	7	24"	10"	70"	112"	26.5"	68"	254
UCL5008246	8	24"	10"	80"	122"	26.5"	78"	281
UCL5009246	9	24"	10"	90"	132"	26.5"	88"	308
75 Incline								
UCL7503246	3	24"	7"	30"	72"	26.5"	28"	160
UCL7504246	4	24"	7"	40"	82"	26.5"	38"	140
UCL7505246	5	24"	7"	50"	92"	26.5"	48"	190
UCL7506246	6	24"	7"	60"	102"	26.5"	58"	210
UCL7507246	7	24"	7"	70"	112"	26.5"	68"	240
UCL7508246	8	24"	7"	80"	122"	26.5"	78"	248
UCL7509246	9	24"	7"	90"	132"	26.5"	88"	276
90 Incline								
UCL9003246	3	24"	2.5"	30"	72"	30"	28"	104
UCL9004246	4	24"	2.5"	40"	82"	30"	38"	117
UCL9005246	5	24"	2.5"	50"	92"	30"	48"	156
UCL9006246	6	24"	2.5"	60"	102"	84"	58"	168
UCL9007246	7	24"	2.5"	70"	112"	84"	68"	184
UCL9008246	8	24"	2.5"	80"	122"	84"	78"	193
UCL9009246	9	24"	2.5"	90"	132"	84"	88"	214

Models Shown are for Perforated Treads



Perforated Tread (6)



Grip Strut (2)

BRIDGE SPAN OPTIONS				
Platform Length	Platform Width	Handrail Height	Overall Height	MODEL #
20"	24"	42"	44"	UCB20246
30"	24"	42"	44"	UCB30246

Models Shown are for Perforated Treads

SUPPORT LEG OPTIONS		
Overall Height	Overall Width	MODEL #
30"	24"	ULK0324
40"	24"	ULK0424
50"	24"	ULK0524
60"	24"	ULK0624
70"	24"	ULK0724
80"	24"	ULK0824
90"	24"	ULK0924

Also Available
in Grip Strut

TURN PLATFORM OPTIONS				
Platform Height	Platform Width	Vertical Clearance	Overall Height	MODEL #
30"	24"	28"	72"	UCT03246
40"	24"	38"	82"	UCT04246
50"	24"	48"	92"	UCT05246
60"	24"	58"	102"	UCT06246
70"	24"	68"	112"	UCT07246
80"	24"	78"	122"	UCT08246
90"	24"	88"	132"	UCT09246

Models Shown are for Perforated Treads

Easily create safe access over pipes and other rooftop obstacles. Special support feet distribute weight to prevent damage to roof membranes.

A rooftop platform allows you to easily create safe access over pipes and other rooftop obstacles. Special support feet distribute weight to prevent damage to roof membranes. You can select the parts needed to create your own specially configured U-Design rooftop platform by following the steps below.

LADDER							
MODEL #	# Of Steps	Top Step Height	Vertical Clearance	Step Width	Step Depth	Overall Height	Overall Width
50° Incline							
URL502	1	20"	17.5"	36"	9.5"	62"	46.25"
URL503	2	30"	27.5"	36"	9.5"	72"	52.75"
URL504	3	40"	37.5"	36"	9.5"	82"	52.75"
URL505	4	50"	47.5"	36"	9.5"	92"	52.75"
URL506	5	60"	57.5"	36"	9.5"	102"	52.75"
90° Incline							
URL902	-	20"	17.5"	24"	1.625"	62"	52.25"
URL903	-	30"	27.5"	24"	1.625"	72"	52.25"
URL904	-	40"	37.5"	24"	1.625"	82"	52.25"
URL905	-	50"	47.5"	24"	1.625"	92"	52.25"
URL906	-	60"	57.5"	24"	1.625"	102"	52.25"

BRIDGE SPAN				Combine up to a total of 120" uninhibited span clearance length. Longer spans require Support Legs
MODEL #	Span Length	Walkway Width	Overall Width	
URTSB36	40"	38"	42"	

TURN PLATFORM							
MODEL #	For Step Sizes	Platform Height	Vertical Clearance	Platform Width	Overall Height	Overall Width	Platform Length
URTP20	2	20"	17.5"	36"	62"	52.75"	40"
URTP30	3	30"	27.5"	36"	72"	52.75"	40"
URTP40	4	40"	37.5"	36"	82"	52.75"	40"
URTP50	5	50"	47.5"	36"	92"	52.75"	40"
URTP60	6	60"	57.5"	36"	102"	52.75"	40"

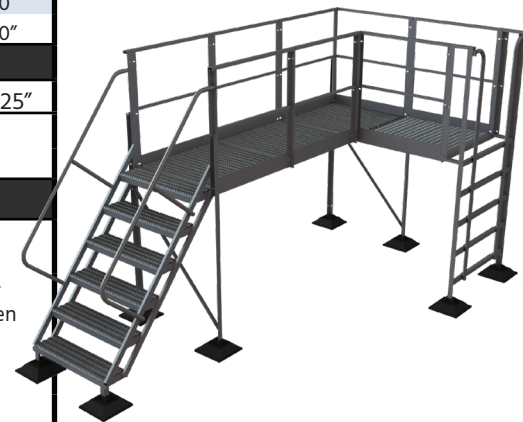
GUARDRAIL ENCLOSURE							
URL902	-	20"	17.5"	24"	1.625"	62"	52.25"
MODEL #	Kit includes guardrail, mid-rail, toeboard and hardware to close any walkway opening. Must be paired with a Leg Kit.						
URTRK1							

LEG KIT			Use a Leg Kit when overall bridge length must be greater than 120". Pick based on number of steps and place between Bridge Spans so that no span exceeds 120" between Ladders, Turn Platforms, or Leg Kits.
MODEL #	For Step Sizes		
URTSL20	2		
URTSL30	3		
URTSL40	4		
URTSL50	5		
URTSL60	6		

U-DESIGN
CONFIGURABLE LADDERS

ROOFTOP PLATFORMS

- **500 lb. rated capacity**
- Aluminum, 1"x2" rectangular tube construction
- Clearance height is 2.5" less than platform height
- 36" wide steps and bridge spans
- Serrated tread surface
- Non-Penetrating Caddy feet - distributes weight evenly to protect roof surface
- 42" guardrail height
- 40" long bridge span that can be combined to create up to 120" uninhibited clearance length



1. Select an incline



2. Select a stair height

3. Select a bridge span

4. Select a configuration



USING TURN PLATFORMS



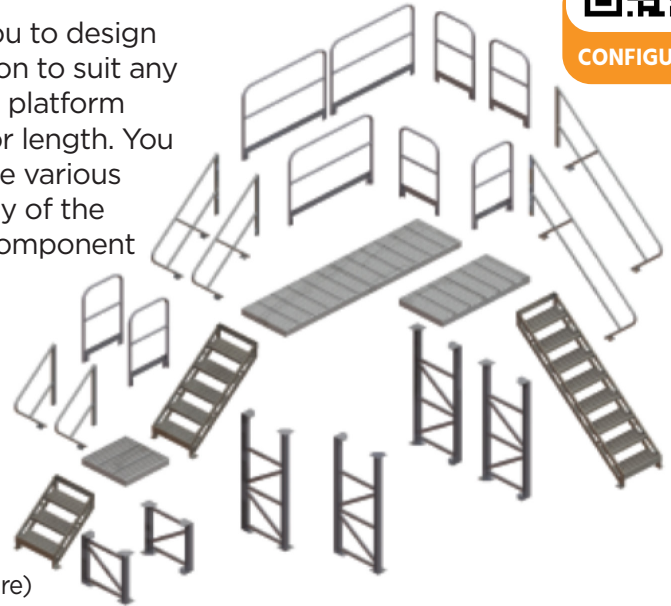
MULTI-PLATFORM

-DESIGN CONFIGURABLE LADDERS

The Multi-Platform Access System (MPAS) allows you to design your own complete platform and ladder configuration to suit any application where work is being done at height. The platform components can be used together for more width or length. You can create a custom multi-tiered system by using the various ladder and stair components available. The versatility of the platforms' ability of being connected to any other component truly gives you the multi-platform access options!

Features:

- Aluminum construction
- Unpainted mill finish
- 500 lb. capacity
- 81" maximum height for all configurations
- Clearance height is 4" less than platform height
- Serrated slip-resistant tread
- Assembly hardware included
- Floor mounting hardware not included ($\frac{3}{8}$ " mounting hardware)



CONFIGURATOR

Create a customized aluminum multi-height platform system, crossover ladder or work stand by using any combination of the five components.

Stairway Ladder Handrails

- Fastens to left or right side of stairway ladders
- Must be ordered to match stairway ladder height

Guardrails

- 30" & 60" available
- 42" top rail height
- 4" kick plate
- Guardrails can be added

Platforms

- 30" width
- 30", 60", 90" or 120" length platforms
- Each platform section requires support legs
- Fastens to stairway ladders, guardrails & legs

Stairway Ladder

- 45° incline
- 24" wide steps
- 9" height increments between stairs
- 18" - 81" height range
- Handrails sold separately
- Support legs not required
- Requires mounting to floor surface

Platform Support Legs

- Clears obstructions 14" - 77"
- 9" height increments
- Requires mounting to floor surface
- Required to match platform height
- 1 on each end of platform unit

ACCESS SYSTEM

STAIRWAY LADDERS - 45° INCLINE

MODEL #	# Of Steps	Top Step Height	Clearance Height	Step Width	Overall Height	Overall Width	Overall Depth
MPASSW2	1	18"	14"	24"	18"	29"	10"
MPASSW3	2	27"	23"	24"	27"	29"	19"
MPASSW4	3	36"	32"	24"	36"	29"	28"
MPASSW5	4	45"	41"	24"	45"	29"	37"
MPASSW6	5	54"	50"	24"	54"	29"	46"
MPASSW7	6	63"	59"	24"	63"	29"	55"
MPASSW8	7	72"	68"	24"	72"	29"	64"
MPASSW9	8	81"	77"	24"	81"	29"	73"


STAIR UNIT RAILS

MODEL #	For Stair Unit	Railing Height
MPASHR2	MPASSW2	36.5"
MPASHR3	MPASSW3	36.5"
MPASHR4	MPASSW4	36.5"
MPASHR5	MPASSW5	36.5"
MPASHR6	MPASSW6	36.5"
MPASHR7	MPASSW7	36.5"
MPASHR8	MPASSW8	36.5"
MPASHR9	MPASSW9	36.5"


PLATFORM UNITS

MODEL #	Length	Width
MPASP30	30"	30"
MPASP60	60"	30"
MPASP90	90"	30"
MPASP120	120"	30"


PLATFORM SUPPORTING LEGS

MODEL #	For Platform Height
MPASST2	18"
MPASST3	27"
MPASST4	36"
MPASST5	45"
MPASST6	54"
MPASST7	63"
MPASST8	72"
MPASST9	81"


PLATFORM GUARDRAILS

MODEL #	Length	Height
MPASGR30	30"	42"
MPASGR60	60"	42"



MOBILE STEEL WORK PLATFORMS

- 800 lb. rated capacity
- Grip Strut tread
- Ships all-welded
- 50° safety angle incline
- Powder-coat gray finish
- Two 4" casters for easy transport; non-handrail models
- Step lock standard on handrail models
- Two 2.5" diameter pads for stability
- 1" tubular steel construction
- Complies with applicable OSHA & ANSI standards

Also Available in Safety Yellow



WITH HANDRAILS								WITHOUT HANDRAILS							
MODEL #	# of Steps	Step Width	Platform Height	Overall Height	Overall Length	Overall Length	Weight	MODEL #	# of Steps	Step Width	Platform Height	Overall Height	Overall Length	Overall Length	Weight
24" W x 24" L Platform								24" W x 24" L Platform							
WLWP122424SL	2	24"	20"	56"	35"	35"	76	WLWP022424	2	24"	20"	20"	35"	28"	50
WLWP132424SL	3	24"	30"	66"	43"	35"	91	WLWP032424	3	24"	30"	30"	42"	28"	65
WLWP142424SL	4	24"	40"	76"	51"	35"	110	WLWP042424	4	24"	40"	40"	51"	28"	80
WLWP152424SL	5	24"	50"	86"	60"	35"	120								
24" W x 35" L Platform								24" W x 35" L Platform							
WLWP122436SL	2	24"	20"	56"	46"	35"	91	WLWP022436	2	24"	20"	20"	46"	28"	65
WLWP132436SL	3	24"	30"	66"	54"	35"	106	WLWP032436	3	24"	30"	30"	53"	28"	80
WLWP142436SL	4	24"	40"	76"	62"	35"	121	WLWP042436	4	24"	40"	40"	62"	28"	100
WLWP152436SL	5	24"	50"	86"	71"	35"	135								
24" W x 47" L Platform								24" W x 47" L Platform							
WLWP122448SL	2	24"	20"	56"	58"	35"	85	WLWP022448	2	24"	20"	20"	58"	28"	72
WLWP132448SL	3	24"	30"	66"	66"	35"	118	WLWP032448	3	24"	30"	30"	65"	28"	100
WLWP142448SL	4	24"	40"	76"	74"	35"	138	WLWP042448	4	24"	40"	40"	74"	28"	120
WLWP152448SL	5	24"	50"	86"	83"	35"	157								
36" W x 35" L Platform								36" W x 35" L Platform							
WLWP123636SL	2	36"	20"	56"	46"	40"	122	WLWP023636	2	36"	20"	20"	46"	40"	88
WLWP133636SL	3	36"	30"	66"	54"	40"	137	WLWP043636	4	36"	40"	40"	62"	40"	130
WLWP143636SL	4	36"	40"	76"	62"	40"	152								
WLWP153636SL	5	36"	50"	86"	71"	40"	174								
36" W x 47" L Platform								36" W x 47" L Platform							
WLWP123648SL	2	36"	20"	56"	58"	40"	148	WLWP023648	2	36"	20"	20"	58"	40"	112
WLWP133648SL	3	36"	30"	66"	66"	40"	163	WLWP043648	4	36"	40"	40"	74"	40"	145
WLWP143648SL	4	36"	40"	76"	74"	40"	178								
WLWP153648SL	5	36"	50"	86"	83"	40"	206								



Ergo Matting

MODEL #	Platform Length	Platform Width	Weight
5"-8" Height Adjustment			
MCOS24195	24"	19"	34
MCOS24245	24"	24"	40
MCOS36195	36"	19"	45
MCOS36245	36"	24"	55
MCOS48195	48"	19"	55
MCOS48245	48"	24"	59
MCOS72245	72"	24"	49
9"-14" Height Adjustment			
MCOS24199	24"	19"	37
MCOS24249	24"	24"	44
MCOS36199	36"	19"	48
MCOS36249	36"	24"	97
MCOS48199	48"	19"	99
MCOS48249	48"	24"	112
MCOS72249	72"	24"	139

Grip Strut

MODEL #	Platform Length	Platform Width	Weight
5"-8" Height Adjustment			
WLOS524242	24"	24"	68
WLOS536242	36"	24"	79
WLOS548242	48"	24"	92
WLOS559242	59"	24"	102
WLOS571242	71"	24"	114
WLOS597242	97"	24"	190
9"-14" Height Adjustment			
WLOS924242	24"	24"	70
WLOS936242	36"	24"	82
WLOS948242	48"	24"	95
WLOS959242	59"	24"	105
WLOS971242	71"	24"	117
WLOS997242	97"	24"	193

Provides fall protection during routine maintenance & inspection of refrigeration units on small- to medium-sized trucks



REFRIGERATOR TRUCK ROLLING ACCESS PLATFORMS

- **Adjustable platform height (12" adjustability in 4" increments)**
- **450 lb. Load Capacity**
- Large platform to perform work from 24" W x 120" L
- Serrated tread surface offers excellent slip resistance and drainage properties
- Ladders on both sides for dual access
- Snap chains at entry/exit points and on refrigeration unit access opening
- Designated lifting point for using rope and bucket to bring tools or parts from ground to platform
- Reinforced lifting points on each ladder at 4th step to accommodate adjustability using standard engine puller
- Powder-coated safety yellow
- Ships in 3 pieces (1 platform, 2 ladders); assembly required

MODEL #	RA10FT-R09
Platform Height	103" to 115"
Base Length	130"
Base Width	50"
Platform Length	120"
Platform Width	24"
Overall Height	145" to 157"
Handrail Height	42"
# of Guard Rails	3
# of Steps	7
Step Width	24"
Step Depth	7"

MODULAR DESIGN



Model #	Description
TAVSO23-AS	2 & 3 Step OSHA Compliant Model
TAVSM34-AS	3 & 4 Step MASS. Compliant Model
TAVSC34-AS	3 & 4 Step OSHA Compliant Model

Versatility

2 in 1

Versa-Step's OneStair system enables the stairway to be configured as either a 2-step or 3-step model for OSHA compliant models and 3-step or 4-step model for both CAL-OSHA and MASS. compliant models.

Max Adjust

Versa-Step's PerfAdjust legs offer minimum adjustability, making it easier to position the platform flush with the threshold of the building door. Additionally, the stair stringer adjustability provides the ability to level the stringer on uneven surfaces.

Functionality

Versa-Step's functionality makes it very quick and simple to set up, position flush against the door threshold and attach to the trailer.

Versa-Step's unique modular leg and foot pad design ensures preservation of each PerfAdjust leg for future field applications even when disassembly occurs in the most difficult ground surface conditions.uneven surfaces.

Design your custom ladder system here.

Scan the QR code to begin designing your custom layout using our 3-D Configurator rendering system.

U-Design Configurable Products are an innovative way to more effectively and efficiently identify, select and then purchase the most suitable ladder model for your climbing and access needs, while receiving a custom solution at an off-the-shelf price.

Our Configurator Program allows you to easily design, edit and order your custom ladder system.

U-DESIGN
CONFIGURABLE LADDERS



Product Specifications are subject to change without notice. Please confirm critical product specifications at the time of ordering.

Inspection Procedure

Shipments are made FOB factory. Each product has been inspected before shipment. Consignee is responsible to inspect product at time of delivery and should refuse shipment or provide written notice to carrier upon receipt of damaged products.

Carriers and Ballymore will not accept claims if damage is not noted at the time of delivery.

Freight: Ship Prepaid and Add to take advantage of freight cost reductions with our carrier. Service Charge will be added Ballymore can provide estimated freight cost based upon our preferred carriers. Note: Cost are subject to change depending on fuel surcharges, special delivery requirements, etc. Ballymore will not be responsible for differences in freight estimates and actual freight costs.

On collect or 3rd party billing shipments, any freight claims must be handled by the customer, including refused shipments.

WARRANTY (ALL PRODUCTS INCLUDING LIFTS):

- A. Seller warrants goods manufactured by it to be free from defects in material and workmanship for one (1) year following the date of shipment.
- B. Products, or component parts which may be sold by Seller but which are not manufactured by the Seller are not warranted by the Seller, but are sold only with the warranties, if any, of the manufacturers thereof
- C. Any warranty claim by the Buyer must be in writing, containing full and submitted to Seller within 15 days of when the cause of the claim first came to the Buyer's attention. The relevant product must be held intact by the Buyer to be available for inspection by Seller's staff, agents or representatives.
- D. All product returns require a return authorization prior to shipping (RMA). Returns related to a warranty claim will be accepted on the condition that should Seller, in its reasonable opinion, reject the claim, all costs directly incurred by Seller (including the cost of transport to and from the premises of Seller and inspection) will be paid by the Buyer.
- E. The decision to repair or replace any parts of the product will be made by Seller based on which approach will provide the Buyer with the best service.
- F. The liability of Seller for a breach of any express warranty in these terms and conditions, or breach of an implied warranty, condition or representations required by law to be provided, if any, is limited to (the choice of which is at the discretion of Seller). In the case of product:
 - i. replace the product or provide similar product; or
 - ii. repair the product; or
 - iii. pay to the Buyer the reasonable cost of replacing the product or acquiring an equivalent product; or
 - iv. pay the Buyer the reasonable cost of having product repaired; or
 - v. accept return of the product and refund the purchase price;
- G. To the full extent permitted by law, Seller shall not be held liable for any defects in the product which are the result of:
 - a. improper use or mismanagement of the product by the Buyer;
 - b. operation other than in accordance with the Seller's operating manual or official user supplements and bulletins supplied by Seller;
 - c. use of the product in a manner which is not reasonably contemplated by Seller;
 - d. use of the product with parts which have not been approved for use by Seller;
 - e. modification of the product in a manner not authorized by Seller;
 - f. subjection of the product to unusual or non-recommended conditions, physical, environmental or electrical stress;
 - g. reinstallation or moving of the product by a person other than Seller or a 3rd party approved by Seller;
 - h. the Buyer's failure to comply with any of these terms and conditions; or
 - i. the failure or refusal to install engineering changes or enhancements to the product recommended by Seller.
- H. Notwithstanding any other provision of these terms and conditions, to the full extent permitted by law. Seller shall not be liable to the Buyer for any indirect, consequential, incidental, punitive or special loss (including, without limitation, loss of profits, business, interest or anticipated savings) howsoever arising and whether caused by the negligence of Seller, its employees, agents and/or contractors.
- I. This warranty does not cover labor or other costs or expenses to remove or install any defective, repaired or replaced goods.

RETURN POLICY:

If for any reason Buyer is not satisfied with any standard product received from Seller, Buyer must advise Seller within 15 days of receipt of your order. All items to be returned must be authorized and assigned an RMA number by Seller. We will not accept any returns without a Seller issued RMA number. All returns must be in good condition, in the original packaging (or reasonable substitute) and prepaid within a 15-day period of RMA issue. A 20% -25% re-stocking fee will be applied to all standard items including lifts; 50% on aluminum and stainless. All modified items are non-returnable.

NON-REFUNDABLE ITEMS:

Custom or modified ladders, work platforms, crossovers, modified or custom lifts are non-refundable.

MINIMUM ORDER: \$15.00. Prepay and add shipments are subject to a service charge.

SEE OUR **OTHER CATALOGS** FOR MORE PRODUCTS!



Find More Ballymore
Products Here!

MORE **PRODUCTS** = MORE **SOLUTIONS**

ROLLING SAFETY LADDERS • PERSONNEL LIFTS • MATERIAL HANDLING • WORK PLATFORMS • CARTS



501 Gunnard Carlson Drive
Coatesville, PA 19320

231 W Stewart Huston Drive
Coatesville, PA 19320

251 Waverly Blvd
Coatesville, PA 19320

390 Fountain St
Pittsburgh, PA 15668

W226N900 Eastmound Dr.
Waukesha, WI 53186

N3477 US Highway 151
Waupun, WI 53963

456 Lakeshore Parkway
Rock Hill, SC 29730

3545 Centre Circle STE B
Fort Mill, SC 29715

412.826.8531 • 800.565.2165 • WWW.BALLYMORE.COM/TRIARC/
610.593.5062 • 800.762.8327 • WWW.BALLYMORE.COM